

Milk production report

23/24 by State

(Million Litres)



	New South Wales			Victoria			Queensland			South Australia			Western Australia			Tasmania			Australia		
	22/23	23/24	Var %	22/23	23/24	Var %	22/23	23/24	Var %	22/23	23/24	Var %	22/23	23/24	Var %	22/23	23/24	Var %	22/23	23/24	Var %
July	80.7	84.7	4.9%	386.4	381.3	-1.3%	22.3	24.1	8.4%	32.1	31.5	-1.7%	29.1	28.7	-1.3%	19.7	19.8	0.5%	570.2	570.2	0.0%
YTD	80.7	84.7	4.9%	386.4	381.3	-1.3%	22.3	24.1	8.4%	32.1	31.5	-1.7%	29.1	28.7	-1.3%	19.7	19.8	0.5%	570.2	570.2	0.0%
August	85.5	90.1	5.3%	450.6	445.9	-1.0%	25.1	25.4	1.5%	35.1	35.7	1.6%	28.2	29.4	4.1%	34.7	37.0	6.5%	659.2	663.5	0.6%
YTD	166.3	174.8	5.1%	837.0	827.3	-1.2%	47.3	49.6	4.7%	67.2	67.2	0.0%	57.3	58.1	1.4%	54.4	56.8	4.3%	1,229.4	1,233.7	0.3%
September	89.6	91.6	2.1%	527.7	525.1	-0.5%	25.0	26.1	4.2%	43.2	43.2	0.0%	30.0	31.0	3.4%	81.6	84.2	3.1%	797.2	801.2	0.5%
YTD	255.9	266.3	4.1%	1,364.7	1,352.4	-0.9%	72.3	75.6	4.6%	110.4	110.4	0.0%	87.3	89.1	2.1%	136.0	140.9	3.6%	2,026.6	2,034.8	0.4%
October	92.8	96.2	3.7%	575.7	582.9	1.2%	26.0	27.4	5.3%	49.0	48.6	-0.8%	32.1	32.6	1.6%	112.9	118.4	4.8%	888.5	906.1	2.0%
YTD	348.7	362.5	4.0%	1,940.4	1,935.3	-0.3%	98.4	103.1	4.8%	159.4	159.0	-0.2%	119.4	121.7	1.9%	248.9	259.3	4.2%	2,915.1	2,940.9	0.9%
November	86.4	94.0	8.8%	519.3	553.9	6.6%	25.5	25.7	0.8%	45.5	46.7	2.5%	30.1	29.8	-1.0%	112.0	119.9	7.1%	818.9	870.0	6.2%
YTD	435.1	456.6	4.9%	2,459.8	2,489.2	1.2%	123.9	128.8	3.9%	204.9	205.7	0.4%	149.5	151.5	1.4%	360.9	379.1	5.1%	3,734.1	3,810.9	2.1%
December	86.2	93.8	8.8%	499.0	504.8	1.2%	25.6	25.8	1.0%	42.8	43.6	1.7%	28.2	28.5	1.1%	108.4	110.6	2.0%	790.2	807.1	2.1%
YTD	521.3	550.4	5.6%	2,958.8	2,994.0	1.2%	149.4	154.6	3.4%	247.8	249.3	0.6%	177.7	180.0	1.3%	469.3	489.7	4.4%	4,524.3	4,618.0	2.1%
January	81.0	88.6	9.3%	423.3	447.4	5.7%	24.5	24.4	-0.2%	39.1	40.3	3.1%	26.4	27.2	3.0%	97.1	99.3	2.3%	691.4	727.2	5.2%
YTD	602.4	638.9	6.1%	3,382.0	3,441.4	1.8%	173.9	179.0	2.9%	286.8	289.6	0.9%	204.1	207.3	1.5%	566.4	589.1	4.0%	5,215.7	5,345.2	2.5%
February	72.9	77.7	6.6%	323.7	356.9	10.3%	20.3	20.5	1.1%	34.8	37.3	7.3%	24.3	25.8	6.1%	77.4	83.2	7.4%	553.5	601.4	8.7%
YTD	675.3	716.6	6.1%	3,705.7	3,798.3	2.5%	194.2	199.5	2.7%	321.7	326.9	1.6%	228.5	233.1	2.0%	643.8	672.2	4.4%	5,769.2	5,946.6	3.1%
March	78.4	80.3	2.4%	333.8	347.6	4.2%	21.3	20.8	-2.3%	39.9	40.3	0.9%	27.1	27.8	2.7%	79.9	79.3	-0.8%	580.3	596.1	2.7%
YTD	753.6	796.9	5.7%	4,039.5	4,145.9	2.6%	215.5	220.3	2.2%	361.6	367.2	1.5%	255.6	260.9	2.1%	723.7	751.5	3.8%	6,349.5	6,542.7	3.0%
April	75.8	78.3	3.3%	340.1	353.8	4.0%	20.7	19.6	-5.2%	38.7	39.5	2.1%	26.2	26.7	2.1%	75.7	73.9	-2.4%	577.2	591.8	2.5%
YTD	829.4	875.2	5.5%	4,379.5	4,499.7	2.7%	236.2	239.9	1.6%	400.3	406.7	1.6%	281.7	287.6	2.1%	799.4	825.4	3.2%	6,926.6	7,134.6	3.0%
May	80.0	82.6	3.3%	388.2	405.4	4.4%	20.8	21.0	1.1%	38.0	38.8	2.1%	28.1	28.4	1.0%	68.2	68.8	0.9%	623.3	645.1	3.5%
YTD	909.4	957.8	5.3%	4,767.7	4,905.1	2.9%	257.0	260.9	1.5%	438.3	445.5	1.6%	309.8	316.0	2.0%	867.6	894.3	3.1%	7,549.9	7,779.6	3.0%
June	80.4	82.4	2.5%	373.3	391.2	4.8%	21.8	21.2	-2.8%	33.8	33.3	-1.5%	28.5	28.1	-1.4%	38.8	40.1	3.3%	576.6	596.3	3.4%
YTD	989.9	1,040.2	5.1%	5,141.0	5,296.4	3.0%	278.8	282.1	1.2%	472.1	478.8	1.4%	338.4	344.1	1.7%	906.4	934.3	3.1%	8,126.5	8,375.9	3.1%
Total	989.9	1,040.2		5,141.0	5,296.4		278.8	282.1		472.1	478.8		338.4	344.1		906.4	934.3		8,126.5	8,375.9	

Produced by the Economics, Data and Insights team at Dairy Australia, Source: Dairy Manufacturers

Please note: These reports contain data based on a combination of voluntary direct reporting from processors, and data sourced from government agencies. Retrospective adjustments are possible if new or revised data is received.

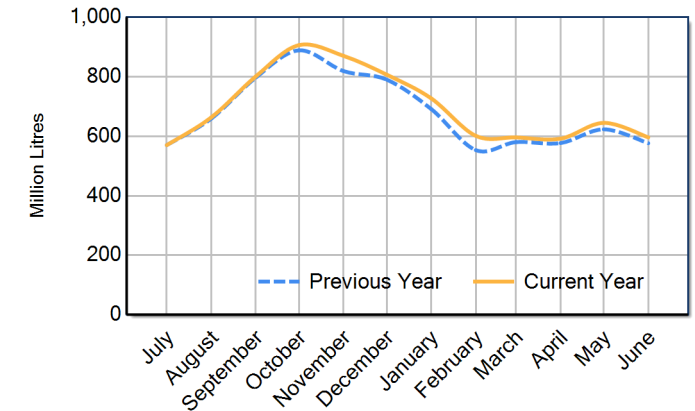
Milk production report (Litres '000s)



National

		NSW	VIC	QLD	SA	WA	TAS	Australia
Month	June-22	77,754	371,913	21,967	33,167	28,575	36,407	569,783
	June-23	80,446	373,346	21,787	33,754	28,527	38,768	576,628
	June-24	82,449	391,243	21,182	33,260	28,118	40,056	596,308
	% change	2.5%	4.8%	-2.8%	-1.5%	-1.4%	3.3%	3.4%
Region Share	June-23	14.0%	64.7%	3.8%	5.9%	4.9%	6.7%	100.0%
	June-24	13.8%	65.6%	3.6%	5.6%	4.7%	6.7%	100.0%
Year To Date		NSW	VIC	QLD	SA	WA	TAS	Australia
	2021/2022	1,072,424	5,464,700	299,065	490,444	340,630	886,949	8,554,211
	2022/2023	989,863	5,141,041	278,752	472,078	338,366	906,416	8,126,515
	2023/2024	1,040,235	5,296,354	282,107	478,805	344,129	934,310	8,375,938
% change	5.1%	3.0%	1.2%	1.4%	1.7%	3.1%	3.1%	
Region Share	2022/2023	12.2%	63.3%	3.4%	5.8%	4.2%	11.2%	100.0%
	2023/2024	12.4%	63.2%	3.4%	5.7%	4.1%	11.2%	100.0%
Total		NSW	VIC	QLD	SA	WA	TAS	Australia
	2022/2023	989,863	5,141,041	278,752	472,078	338,366	906,416	8,126,515
	Region Share	12.2%	63.3%	3.4%	5.8%	4.2%	11.2%	100.0%

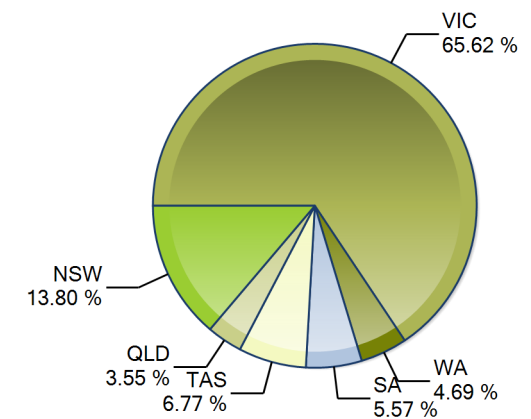
Australian Milk Production - National Total 2022/2023 & 2023/2024



Average Milkfat & Protein (%)

		NSW	VIC	QLD	SA	WA	TAS	Australia
Milkfat	June-22	4.21%	4.45%	4.26%	4.23%	4.12%	4.81%	4.40%
	June-23	4.22%	4.39%	4.22%	4.24%	4.13%	5.00%	4.38%
	June-24	4.20%	4.41%	4.26%	4.27%	4.07%	4.84%	4.38%
	% change 23/24	-0.5%	0.5%	0.9%	0.6%	-1.5%	-3.2%	0.0%
Protein	June-22	3.44%	3.49%	3.42%	3.45%	3.30%	3.88%	3.49%
	June-23	3.45%	3.49%	3.41%	3.45%	3.32%	3.87%	3.50%
	June-24	3.49%	3.53%	3.48%	3.49%	3.33%	3.95%	3.54%
	% change 23/24	1.3%	1.0%	1.9%	1.1%	0.3%	2.2%	1.2%

State Share of Milk Production for the month of June 2024



Note: These reports contain data based on a combination of voluntary direct reporting from processors, and data sourced from government agencies. Retrospective adjustments are possible if new or revised data is received.