

# Victoria Milk Production

## 22/23 by Region

### (Million Litres)



		Eastern			Northern			Western			Victoria		
		21/22	22/23	Var %	21/22	22/23	Var %	21/22	22/23	Var %	21/22	22/23	Var %
July		116.4	106.4	-8.6%	116.2	114.6	-1.4%	179.3	165.4	-7.7%	411.9	386.4	-6.2%
	YTD	116.4	106.4	-8.6%	116.2	114.6	-1.4%	179.3	165.4	-7.7%	411.9	386.4	-6.2%
August		158.6	144.8	-8.7%	126.7	124.4	-1.8%	186.2	181.4	-2.6%	471.6	450.6	-4.4%
	YTD	275.0	251.3	-8.6%	242.9	239.0	-1.6%	365.5	346.7	-5.1%	883.4	837.0	-5.3%
September		206.5	189.7	-8.2%	155.8	147.2	-5.6%	202.3	190.9	-5.6%	564.7	527.7	-6.5%
	YTD	481.5	441.0	-8.4%	398.8	386.2	-3.2%	567.8	537.6	-5.3%	1,448.1	1,364.7	-5.8%
October		234.0	216.8	-7.3%	170.0	157.7	-7.2%	219.1	201.2	-8.2%	623.1	575.7	-7.6%
	YTD	715.5	657.8	-8.1%	568.7	543.8	-4.4%	786.9	738.8	-6.1%	2,071.1	1,940.4	-6.3%
November		220.4	197.8	-10.2%	162.1	142.5	-12.1%	203.9	179.0	-12.2%	586.4	519.3	-11.4%
	YTD	935.9	855.6	-8.6%	730.8	686.3	-6.1%	990.8	917.8	-7.4%	2,657.5	2,459.8	-7.4%
December		206.4	190.2	-7.9%	153.0	136.6	-10.7%	181.8	172.2	-5.3%	541.3	499.0	-7.8%
	YTD	1,142.4	1,045.8	-8.5%	883.8	822.9	-6.9%	1,172.6	1,090.0	-7.0%	3,198.8	2,958.8	-7.5%
January		169.7	159.6	-6.0%	133.6	120.0	-10.2%	141.8	143.7	1.3%	445.2	423.3	-4.9%
	YTD	1,312.1	1,205.4	-8.1%	1,017.4	942.9	-7.3%	1,314.4	1,233.7	-6.1%	3,644.0	3,382.0	-7.2%
February		132.3	121.2	-8.4%	105.3	94.9	-9.9%	110.2	107.6	-2.3%	347.8	323.7	-6.9%
	YTD	1,444.4	1,326.6	-8.2%	1,122.7	1,037.8	-7.6%	1,424.7	1,341.4	-5.8%	3,991.8	3,705.7	-7.2%
March		133.1	124.0	-6.9%	107.9	99.4	-7.8%	113.2	110.3	-2.5%	354.2	333.8	-5.8%
	YTD	1,577.6	1,450.6	-8.0%	1,230.6	1,137.2	-7.6%	1,537.9	1,451.7	-5.6%	4,346.0	4,039.5	-7.1%
April		129.0	123.7	-4.1%	116.4	105.7	-9.2%	112.0	110.6	-1.3%	357.5	340.1	-4.9%
	YTD	1,706.6	1,574.3	-7.8%	1,347.0	1,242.9	-7.7%	1,649.9	1,562.3	-5.3%	4,703.5	4,379.5	-6.9%
May		128.9	129.1	0.1%	129.2	123.4	-4.5%	131.1	135.7	3.5%	389.3	388.2	-0.3%
	YTD	1,835.6	1,703.4	-7.2%	1,476.2	1,366.3	-7.4%	1,781.0	1,698.0	-4.7%	5,092.8	4,767.7	-6.4%
June		108.7	112.6	3.5%	116.2	111.9	-3.7%	147.0	148.8	1.3%	371.9	373.3	0.4%
	YTD	1,944.3	1,816.0	-6.6%	1,592.4	1,478.2	-7.2%	1,928.0	1,846.9	-4.2%	5,464.7	5,141.0	-5.9%
<b>Total</b>		<b>1,944.3</b>	<b>1,816.0</b>		<b>1,592.4</b>	<b>1,478.2</b>		<b>1,928.0</b>	<b>1,846.9</b>		<b>5,464.7</b>	<b>5,141.0</b>	

Produced by the Economics, Data and Insights team at Dairy Australia, Source: Dairy Manufacturers

Please Note: These reports contain data based on a combination of voluntary direct reporting from processors, and data sourced from government agencies. Retrospective adjustments are possible if new or revised data is received.

# Milk production report (Litres '000s)

## Victoria

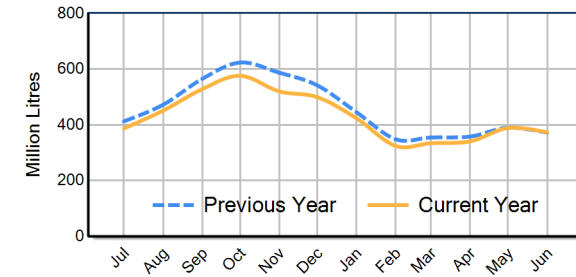


		Eastern	Northern	Western	VIC
Month	June-21	118,909	126,052	161,058	406,019
	June-22	108,722	116,217	146,974	371,913
	June-23	112,574	111,927	148,845	373,346
	<b>% change</b>	<b>3.5%</b>	<b>-3.7%</b>	<b>1.3%</b>	<b>0.4%</b>
Region Share	June-22	29.2%	31.2%	39.5%	100.0%
	June-23	30.2%	30.0%	39.9%	100.0%
		Eastern	Northern	Western	VIC
Year To Date	2020/2021	2,022,109	1,633,974	1,994,708	5,650,790
	2021/2022	1,944,272	1,592,407	1,928,021	5,464,700
	2022/2023	1,815,995	1,478,179	1,846,866	5,141,041
	<b>% change</b>	<b>-6.6%</b>	<b>-7.2%</b>	<b>-4.2%</b>	<b>-5.9%</b>
Region Share	2021/2022	35.6%	29.1%	35.3%	100.0%
	2022/2023	35.3%	28.8%	35.9%	100.0%
		Eastern	Northern	Western	VIC
Total	2021/2022				
	<b>Region Share</b>	<b>35.6%</b>	<b>29.1%</b>	<b>35.3%</b>	<b>100.0%</b>

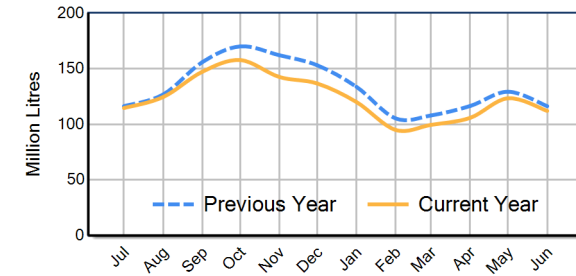
## Average Milkfat & Protein (%)

		Eastern	Northern	Western	VIC
Milkfat	June-21	4.40%	4.36%	4.25%	4.33%
	June-22	4.50%	4.42%	4.43%	4.45%
	June-23	4.42%	4.37%	4.38%	4.39%
	<b>% change 22/23</b>	<b>-1.9%</b>	<b>-1.0%</b>	<b>-1.2%</b>	<b>-1.3%</b>
		Eastern	Northern	Western	VIC
Protein	June-21	3.54%	3.48%	3.39%	3.46%
	June-22	3.57%	3.52%	3.41%	3.49%
	June-23	3.57%	3.49%	3.44%	3.49%
	<b>% change 22/23</b>	<b>-0.1%</b>	<b>-0.9%</b>	<b>1.0%</b>	<b>0.1%</b>

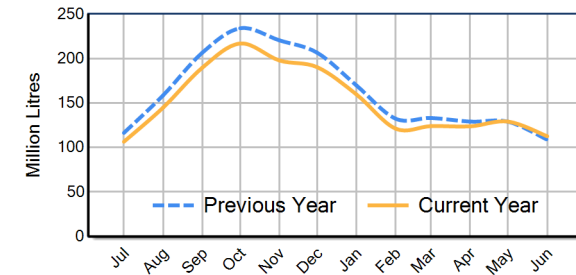
VIC Milk Production - Total Regions



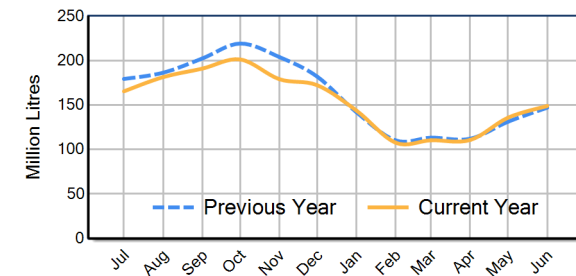
VIC Milk Production - Northern Region



VIC Milk Production - Eastern Region



VIC Milk Production - Western Region



Please note: These reports contain data based on a combination of voluntary direct reporting from processors, and data sourced from government agencies. Retrospective adjustments are possible if new or revised data is received.