

Victoria Milk Production

24/25 by Region

(Million Litres)



		Eastern			Northern			Western			Victoria		
		23/24	24/25	Var %	23/24	24/25	Var %	23/24	24/25	Var %	23/24	24/25	Var %
July		114.8	118.2	3.0%	108.5	114.2	5.2%	158.0	158.5	0.3%	381.3	390.9	2.5%
	YTD	114.8	118.2	3.0%	108.5	114.2	5.2%	158.0	158.5	0.3%	381.3	390.9	2.5%
August		151.3	159.5	5.4%	121.2	130.0	7.2%	173.4	172.7	-0.4%	445.9	462.2	3.6%
	YTD	266.1	277.7	4.4%	229.7	244.1	6.3%	331.4	331.2	-0.1%	827.3	853.0	3.1%
September		192.6	203.4	5.6%	145.7	152.3	4.5%	186.8	179.7	-3.8%	525.1	535.4	2.0%
	YTD	458.8	481.2	4.9%	375.5	396.5	5.6%	518.2	510.8	-1.4%	1,352.4	1,388.5	2.7%
October		218.4	231.8	6.2%	160.7	166.1	3.3%	203.7	195.9	-3.8%	582.9	593.8	1.9%
	YTD	677.2	713.0	5.3%	536.2	562.6	4.9%	721.9	706.7	-2.1%	1,935.3	1,982.3	2.4%
November		211.1	218.0	3.2%	152.0	155.9	2.5%	190.7	181.1	-5.0%	553.9	555.0	0.2%
	YTD	888.3	931.0	4.8%	688.2	718.4	4.4%	912.6	887.9	-2.7%	2,489.2	2,537.3	1.9%
December		189.7	194.9	2.7%	145.0	146.1	0.8%	170.1	162.8	-4.3%	504.8	503.8	-0.2%
	YTD	1,078.0	1,125.9	4.4%	833.2	864.5	3.8%	1,082.7	1,050.6	-3.0%	2,994.0	3,041.0	1.6%
January		168.6	162.3	-3.8%	130.1	133.2	2.4%	148.7	136.0	-8.6%	447.4	431.5	-3.6%
	YTD	1,246.7	1,288.2	3.3%	963.3	997.7	3.6%	1,231.4	1,186.6	-3.6%	3,441.4	3,472.5	0.9%
February		135.4			105.1			116.4			356.9		
	YTD	1,382.0			1,068.4			1,347.9			3,798.3		
March		131.3			106.9			109.4			347.6		
	YTD	1,513.3			1,175.3			1,457.3			4,145.9		
April		127.4			115.3			111.1			353.8		
	YTD	1,640.7			1,290.6			1,568.4			4,499.7		
May		143.7			127.7			134.1			405.4		
	YTD	1,784.4			1,418.3			1,702.4			4,905.1		
June		122.7			119.9			148.7			391.2		
	YTD	1,907.1			1,538.1			1,851.1			5,296.4		
Total		1,907.1			1,538.1			1,851.1			5,296.4		

Produced by the Economics, Data and Insights team at Dairy Australia, Source: Dairy Manufacturers

Please Note: These reports contain data based on a combination of voluntary direct reporting from processors, and data sourced from government agencies. Retrospective adjustments are possible if new or revised data is received.

Milk production report (Litres '000s)

Victoria

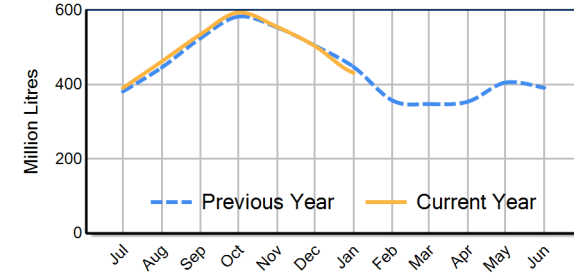


		Eastern	Northern	Western	VIC	
Month	January-23	159,589	119,956	143,707	423,252	
	January-24	168,631	130,077	148,709	447,416	
	January-25	162,290	133,192	135,988	431,471	
	% change	-3.8%	2.4%	-8.6%	-3.6%	
Region Share	January-24	37.7%	29.1%	33.2%	100.0%	
	January-25	37.6%	30.9%	31.5%	100.0%	
Year To Date			Eastern	Northern	Western	VIC
	2022/2023	1,205,423	941,631	1,234,985	3,382,039	
	2023/2024	1,246,651	963,282	1,231,439	3,441,371	
	2024/2025	1,288,174	997,702	1,186,629	3,472,505	
	% change	3.3%	3.6%	-3.6%	0.9%	
Region Share	2023/2024	36.2%	28.0%	35.8%	100.0%	
	2024/2025	37.1%	28.7%	34.2%	100.0%	
Total			Eastern	Northern	Western	VIC
	2023/2024	1,907,072	1,538,138	1,851,145	5,296,354	
	Region Share	36.0%	29.0%	35.0%	100.0%	

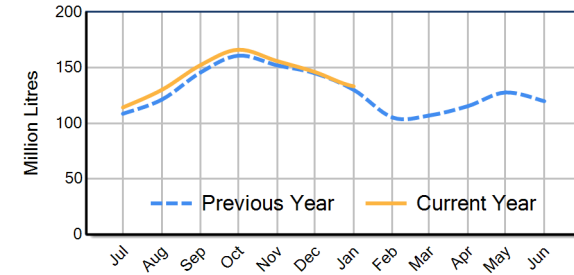
Average Milkfat & Protein (%)

		Eastern	Northern	Western	VIC	
Milkfat	January-23	4.17%	4.15%	4.31%	4.21%	
	January-24	4.21%	4.21%	4.39%	4.27%	
	January-25	4.30%	4.22%	4.41%	4.31%	
	% change 24/25	2.1%	0.4%	0.4%	0.9%	
Protein			Eastern	Northern	Western	VIC
	January-23	3.31%	3.25%	3.42%	3.33%	
	January-24	3.34%	3.31%	3.43%	3.36%	
	January-25	3.35%	3.35%	3.44%	3.38%	
	% change 24/25	0.5%	1.2%	0.3%	0.6%	

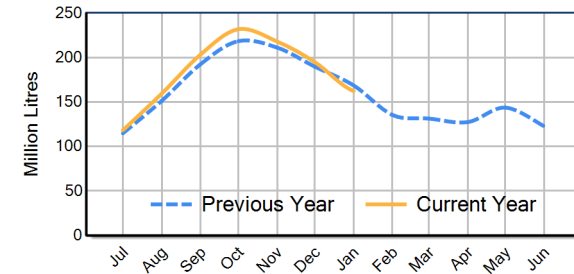
VIC Milk Production - Total Regions



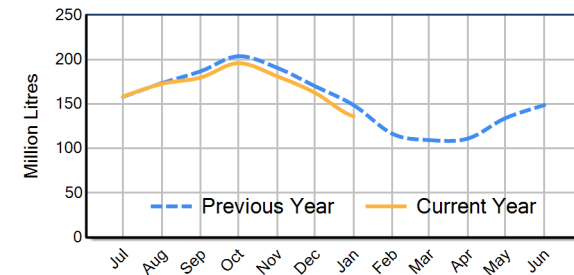
VIC Milk Production - Northern Region



VIC Milk Production - Eastern Region



VIC Milk Production - Western Region



Please note: These reports contain data based on a combination of voluntary direct reporting from processors, and data sourced from government agencies. Retrospective adjustments are possible if new or revised data is received.