

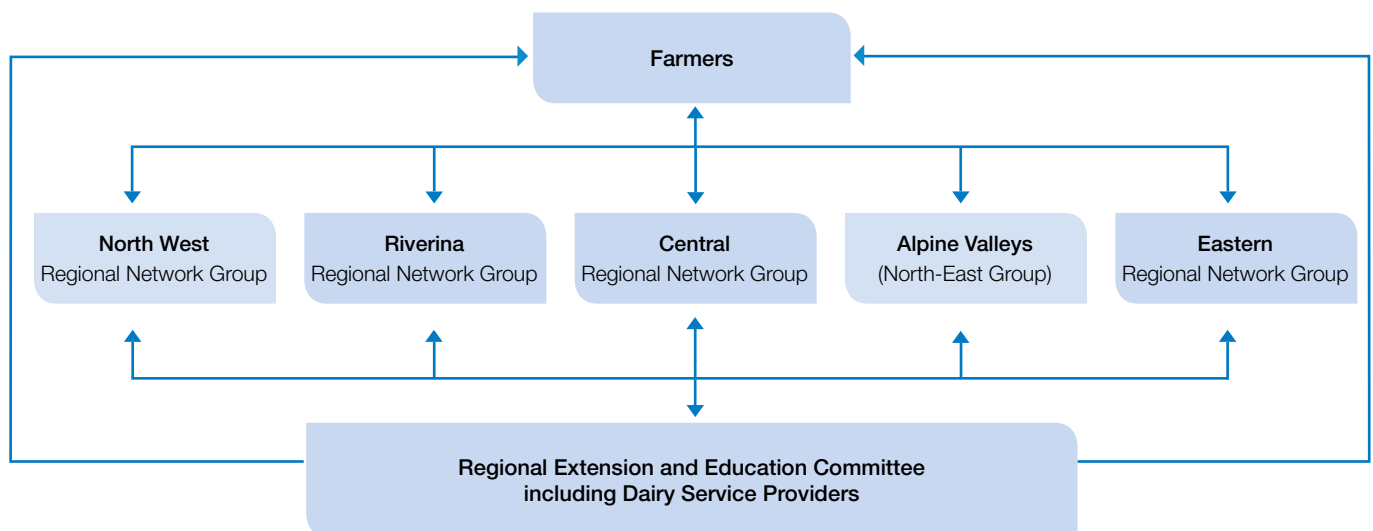
# How Murray Dairy farmers can shape future dairy services

Murray Dairy is a not-for-profit Regional Development Program (RDP) specifically for the dairy farmers of northern Victoria and southern New South Wales. Murray Dairy's role is to deliver programs and services to dairy farmers to build their capabilities in operating profitability and more efficiently.

One aspect of Murray Dairy's role is achieved through the coordination of education and extension services in collaboration with a number of other organisations serving the dairy industry. Murray Dairy along with Dairy Australia and the State Government utilises farmer participation in Regional

Network Groups (RNGs) and the Regional Extension and Education Committee (REEC) to help identify and prioritise future dairy industry projects, courses and events. Farmer input is essential in guiding these services that are run across the Murray Dairy region.

## How it works



There are currently five Regional Network Groups in place across the Murray Dairy region, which are open and inclusive to all dairy farmers. These meetings which often have guest speakers present, enable farmers to raise issues and discuss current topics. These meetings also provide an opportunity for farmers to hear about services on offer from the various service providers supporting the dairy industry in the region.

The issues raised by farmers at the RNG meetings are aligned to the Dairy Program Areas (shown right). It is responsible for the overseeing of the formulation and delivery of extension and education activities and events to both the dairy industry and its key stakeholders in the Murray Dairy region.

### How can you be involved?

RNG meetings are held four times a year in each of the five sub-regions:

North West – Cohuna  
Riverina – Finley  
Central – Kyabram  
Eastern – Numurkah  
Alpine – Wodonga

Your attendance and input would be highly valued. If you would like to be involved in one of the next Regional Network Group meetings please contact **Murray Dairy** on **(03) 5833 5312** or email [admin@murraydairy.com.au](mailto:admin@murraydairy.com.au) and our Extension Coordinator, Ross Read will provide you with details on the group and the next meeting date that is most appropriate for you.

### Dairy program areas

#### Feedbase and animal nutrition

Services related to feedbase planning and management.

#### Animal performance

Services aimed at enhancing animal performance and productivity.

#### Farm business management

Services to improve farmer business capacity, productivity, profitability and sustainability to understand the key profit drivers in their businesses.

#### Land, water, carbon

Services promoting best practices in land and water management for productive, sustainable dairy farms.

#### People and capability

Services that help support the dairy industry, including building skills to attract, retain and manage employees.