

# Victoria Milk Production

## 24/25 by Region

### (Million Litres)



		Eastern			Northern			Western			Victoria		
		23/24	24/25	Var %	23/24	24/25	Var %	23/24	24/25	Var %	23/24	24/25	Var %
July		114.8	118.2	3.0%	108.5	114.2	5.2%	158.0	158.5	0.3%	381.3	390.9	2.5%
	YTD	114.8	118.2	3.0%	108.5	114.2	5.2%	158.0	158.5	0.3%	381.3	390.9	2.5%
August		151.3	159.5	5.4%	121.2	130.0	7.2%	173.4	172.7	-0.4%	445.9	462.2	3.6%
	YTD	266.1	277.7	4.4%	229.7	244.1	6.3%	331.4	331.2	-0.1%	827.3	853.0	3.1%
September		192.6	203.4	5.6%	145.7	152.3	4.5%	186.8	179.7	-3.8%	525.1	535.4	2.0%
	YTD	458.8	481.2	4.9%	375.5	396.5	5.6%	518.2	510.8	-1.4%	1,352.4	1,388.5	2.7%
October		218.4	231.8	6.2%	160.7	166.1	3.3%	203.7	195.9	-3.8%	582.9	593.8	1.9%
	YTD	677.2	713.0	5.3%	536.2	562.6	4.9%	721.9	706.7	-2.1%	1,935.3	1,982.3	2.4%
November		211.1	218.0	3.2%	152.0	155.9	2.5%	190.7	181.1	-5.0%	553.9	555.0	0.2%
	YTD	888.3	931.0	4.8%	688.2	718.4	4.4%	912.6	887.9	-2.7%	2,489.2	2,537.3	1.9%
December		189.7	194.9	2.7%	145.0	146.1	0.8%	170.1	162.8	-4.3%	504.8	503.8	-0.2%
	YTD	1,078.0	1,125.9	4.4%	833.2	864.5	3.8%	1,082.7	1,050.6	-3.0%	2,994.0	3,041.0	1.6%
January		168.6			130.1			148.7			447.4		
	YTD	1,246.7			963.3			1,231.4			3,441.4		
February		135.4			105.1			116.4			356.9		
	YTD	1,382.0			1,068.4			1,347.9			3,798.3		
March		131.3			106.9			109.4			347.6		
	YTD	1,513.3			1,175.3			1,457.3			4,145.9		
April		127.4			115.3			111.1			353.8		
	YTD	1,640.7			1,290.6			1,568.4			4,499.7		
May		143.7			127.7			134.1			405.4		
	YTD	1,784.4			1,418.3			1,702.4			4,905.1		
June		122.7			119.9			148.7			391.2		
	YTD	1,907.1			1,538.1			1,851.1			5,296.4		
<b>Total</b>		<b>1,907.1</b>			<b>1,538.1</b>			<b>1,851.1</b>			<b>5,296.4</b>		

Produced by the Economics, Data and Insights team at Dairy Australia, Source: Dairy Manufacturers

Please Note: These reports contain data based on a combination of voluntary direct reporting from processors, and data sourced from government agencies. Retrospective adjustments are possible if new or revised data is received.

# Milk production report (Litres '000s)

## Victoria

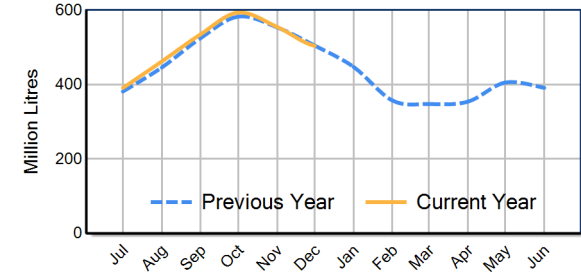


		Eastern	Northern	Western	VIC
Month	December-22	190,199	136,021	172,790	499,009
	December-23	189,686	144,974	170,128	504,788
	December-24	194,901	146,094	162,758	503,753
	<b>% change</b>	<b>2.7%</b>	<b>0.8%</b>	<b>-4.3%</b>	<b>-0.2%</b>
Region Share	December-23	37.6%	28.7%	33.7%	100.0%
	December-24	38.7%	29.0%	32.3%	100.0%
Year To Date		Eastern	Northern	Western	VIC
	2022/2023	1,045,834	821,674	1,091,278	2,958,787
	2023/2024	1,078,020	833,206	1,082,730	2,993,955
	2024/2025	1,125,884	864,509	1,050,641	3,041,034
	<b>% change</b>	<b>4.4%</b>	<b>3.8%</b>	<b>-3.0%</b>	<b>1.6%</b>
Region Share	2023/2024	36.0%	27.8%	36.2%	100.0%
	2024/2025	37.0%	28.4%	34.5%	100.0%
Total		Eastern	Northern	Western	VIC
	2023/2024				
	<b>Region Share</b>	<b>36.0%</b>	<b>29.0%</b>	<b>35.0%</b>	<b>100.0%</b>

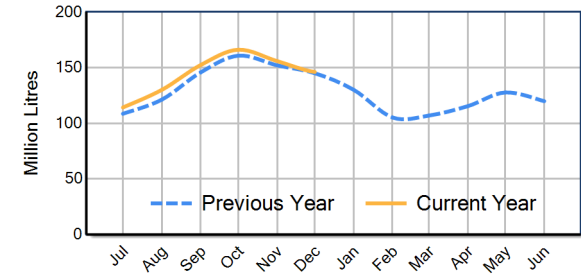
## Average Milkfat & Protein (%)

		Eastern	Northern	Western	VIC
Milkfat	December-22	4.05%	4.14%	4.20%	4.13%
	December-23	4.14%	4.15%	4.31%	4.20%
	December-24	4.13%	4.14%	4.28%	4.18%
	<b>% change 24/25</b>	<b>-0.3%</b>	<b>-0.2%</b>	<b>-0.6%</b>	<b>-0.5%</b>
Protein		Eastern	Northern	Western	VIC
	December-22	3.38%	3.29%	3.46%	3.39%
	December-23	3.34%	3.31%	3.44%	3.37%
	December-24	3.33%	3.30%	3.43%	3.35%
	<b>% change 24/25</b>	<b>-0.4%</b>	<b>-0.4%</b>	<b>-0.3%</b>	<b>-0.4%</b>

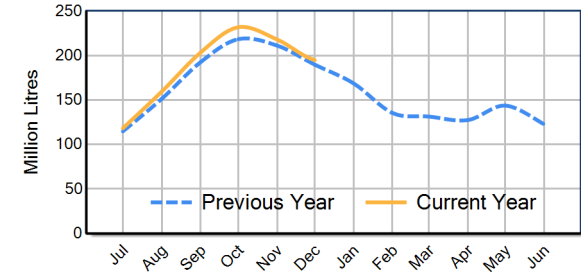
VIC Milk Production - Total Regions



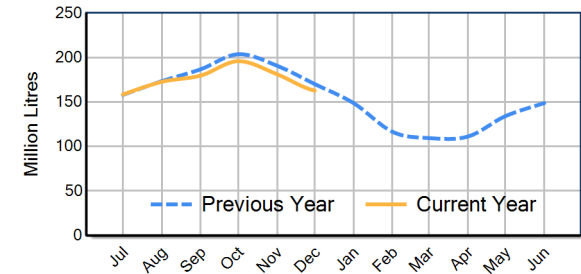
VIC Milk Production - Northern Region



VIC Milk Production - Eastern Region



VIC Milk Production - Western Region



Please note: These reports contain data based on a combination of voluntary direct reporting from processors, and data sourced from government agencies. Retrospective adjustments are possible if new or revised data is received.