

New South Wales Milk Production

24/25 by Region

(Million Litres)



		Inland/Central			North Coast			Southern			New South Wales		
		23/24	24/25	Var %	23/24	24/25	Var %	23/24	24/25	Var %	23/24	24/25	Var %
July		21.0	21.6	2.6%	21.7	21.9	0.9%	41.9	44.4	6.0%	84.7	87.9	3.8%
	YTD	21.0	21.6	2.6%	21.7	21.9	0.9%	41.9	44.4	6.0%	84.7	87.9	3.8%
August		22.0	22.7	3.3%	23.4	23.5	0.6%	44.7	49.1	9.8%	90.1	95.3	5.8%
	YTD	43.1	44.3	2.9%	45.1	45.4	0.7%	86.6	93.5	8.0%	174.8	183.3	4.9%
September		21.3	22.5	5.5%	24.3	24.5	0.9%	45.9	50.3	9.6%	91.6	97.3	6.3%
	YTD	64.4	66.8	3.8%	69.4	69.9	0.8%	132.6	143.9	8.5%	266.3	280.6	5.4%
October		22.7	23.1	1.9%	25.1	25.4	1.5%	48.4	53.2	9.8%	96.2	101.8	5.8%
	YTD	87.1	90.0	3.3%	94.4	95.4	1.0%	181.0	197.1	8.9%	362.5	382.4	5.5%
November		22.7	22.0	-2.9%	24.8	23.1	-6.9%	46.6	50.4	8.1%	94.0	95.4	1.5%
	YTD	109.8	112.0	2.0%	119.2	118.4	-0.7%	227.6	247.4	8.7%	456.6	477.8	4.7%
December		22.6	21.8	-3.3%	24.1	21.6	-10.3%	47.1	49.6	5.3%	93.8	93.1	-0.8%
	YTD	132.3	133.8	1.1%	143.3	140.1	-2.3%	274.7	297.1	8.1%	550.4	570.9	3.7%
January		21.5			22.7			44.4			88.6		
	YTD	153.8			166.0			319.1			638.9		
February		20.1			19.2			38.4			77.7		
	YTD	173.9			185.2			357.5			716.6		
March		20.9			19.6			39.8			80.3		
	YTD	194.8			204.8			397.3			796.9		
April		21.1			18.1			39.2			78.3		
	YTD	215.8			222.9			436.5			875.2		
May		22.7			18.9			41.0			82.6		
	YTD	238.5			241.8			477.5			957.8		
June		22.7			19.4			40.4			82.4		
	YTD	261.2			261.2			517.8			1,040.2		
Total		261.2			261.2			517.8			1,040.2		

Produced by the Economics, Data and Insights team at Dairy Australia, Source: Dairy Manufacturers

Please Note: These reports contain data based on a combination of voluntary direct reporting from processors, and data sourced from government agencies. Retrospective adjustments are possible if new or revised data is received.

Milk production report (Litres '000s)

New South Wales

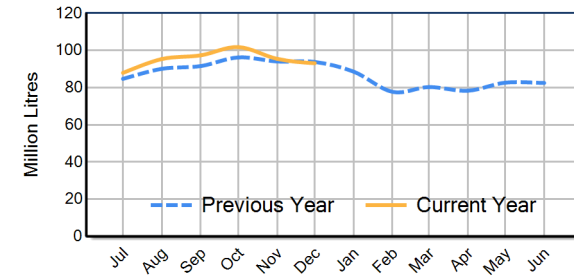


		Inland/Central	North Coast	Southern	NSW
Month	December-22	19,564	21,941	44,725	86,230
	December-23	22,558	24,117	47,119	93,794
	December-24	21,815	21,632	49,636	93,084
	% change	-3.3%	-10.3%	5.3%	-0.8%
Region Share	December-23	24.1%	25.7%	50.2%	100.0%
	December-24	23.4%	23.2%	53.3%	100.0%
		Inland/Central	North Coast	Southern	NSW
Year To Date	2022/2023	118,442	135,341	267,554	521,337
	2023/2024	132,330	143,348	274,685	550,364
	2024/2025	133,781	140,079	297,051	570,911
	% change	1.1%	-2.3%	8.1%	3.7%
Region Share	2023/2024	24.0%	26.0%	49.9%	100.0%
	2024/2025	23.4%	24.5%	52.0%	100.0%
		Inland/Central	North Coast	Southern	NSW
Total	2023/2024				
	Region Share	25.1%	25.1%	49.8%	100.0%

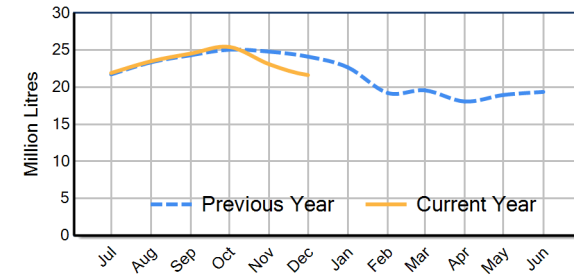
Average Milkfat & Protein (%)

		Inland/Central	North Coast	Southern	NSW
Milkfat	December-22	4.03%	4.06%	4.13%	4.09%
	December-23	3.78%	3.87%	4.00%	3.92%
	December-24	3.89%	3.97%	4.04%	3.99%
	% change 24/25	3.0%	2.6%	1.0%	1.9%
		Inland/Central	North Coast	Southern	NSW
Protein	December-22	3.26%	3.25%	3.33%	3.29%
	December-23	3.23%	3.17%	3.30%	3.25%
	December-24	3.26%	3.22%	3.31%	3.28%
	% change 24/25	1.1%	1.6%	0.4%	0.9%

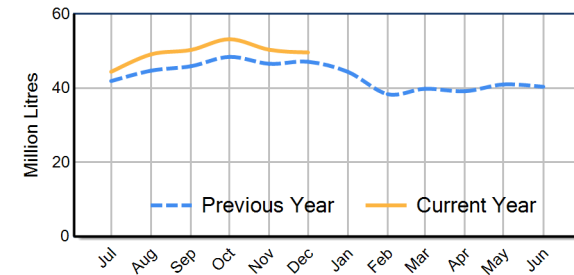
NSW Milk Production - Total Regions



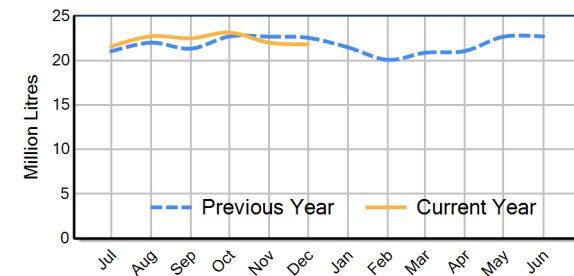
NSW Milk Production - North Coast Region



NSW Milk Production - Southern Region



NSW Milk Production - Inland/Central Region



Please note: These reports contain data based on a combination of voluntary direct reporting from processors, and data sourced from government agencies. Retrospective adjustments are possible if new or revised data is received.