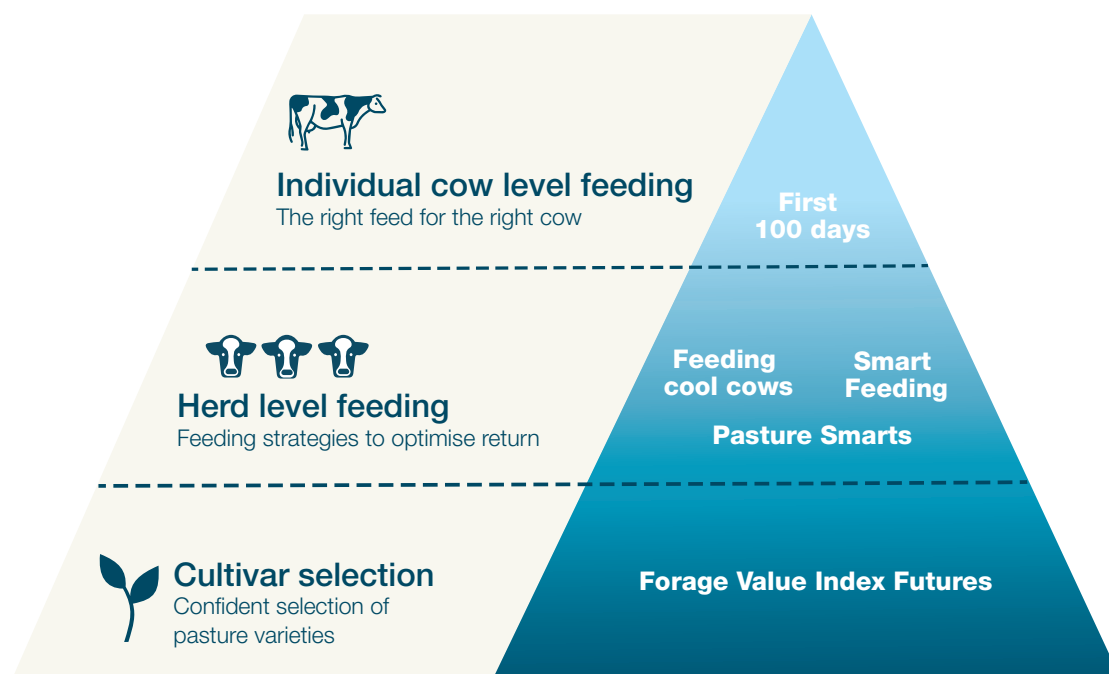


# Solutions for feedbase management

**DairyFeedbase is the dairy industry's leading innovation program designed to revolutionise feedbase management on Australian dairy farms.**

A joint venture between Dairy Australia, Gardiner Foundation and Agriculture Victoria, DairyFeedbase was launched in 2018 and uses the latest technology and science to significantly improve on-farm profitability.

The program has the potential to see returns to the industry of \$100 million a year in 10 years. Farmers can expect DairyFeedbase to deliver easy-to-use digital tools and real-time information to improve decision-making in the paddock and strategically allocate feed at both herd and individual cow level.



**Individual cow level feeding** Project: First 100 days

Assist farmers to deliver the right feed for the right cow, to better supplement cows for peak lactation, improve productivity and animal health and identify early metabolic issues.

You can expect:

- New approaches to allocate feed at an individual cow level
- Improved feed efficiencies to benefit overall farm economic performance



**Herd level feeding** Projects: Pasture Smarts, Smart Feeding, Feeding Cool Cows

DairyFeedbase will assist farmers with modern, user friendly tools designed to automate pasture measurement improved pasture allocation, leading to more pasture grazed, and conserved on Australian dairy farms. It will also help to better allocate available feed resources at a herd level and develop diets so cows can withstand Australia's hot weather conditions.

You can expect:

- New feeding strategies during hot weather
- New targets for genetic selection to breed cows for Australian conditions
- Tools for more informed pasture management decision making
- Strategies to optimise feed allocation and productivity at a herd level



**Cultivar selection** Project: Forage Value Index Futures

DairyFeedbase will boost the quality of data and information within Dairy Australia's Forage Value Index so farmers can make even better cultivar selection decisions for their farms.

You can expect:

- More confident selection of pasture varieties
- A focus in varieties with 20 per cent more productivity