

New South Wales Milk Production

23/24 by Region

(Million Litres)



		Inland/Central			North Coast			Southern			New South Wales		
		22/23	23/24	Var %	22/23	23/24	Var %	22/23	23/24	Var %	22/23	23/24	Var %
July		20.1	21.6	7.6%	20.3	21.7	6.9%	40.3	41.4	2.5%	80.7	84.7	4.9%
	YTD	20.1	21.6	7.6%	20.3	21.7	6.9%	40.3	41.4	2.5%	80.7	84.7	4.9%
August		20.3	22.6	11.1%	21.6	23.4	8.3%	43.6	44.1	1.2%	85.5	90.1	5.3%
	YTD	40.4	44.2	9.4%	41.9	45.1	7.6%	84.0	85.5	1.8%	166.3	174.8	5.1%
September		20.6	21.9	6.5%	24.0	24.3	1.4%	45.1	45.4	0.6%	89.6	91.6	2.1%
	YTD	60.9	66.1	8.4%	65.9	69.4	5.3%	129.1	130.9	1.4%	255.9	266.3	4.1%
October		20.9	23.3	11.4%	25.0	25.1	0.3%	46.9	47.9	2.1%	92.8	96.2	3.7%
	YTD	81.8	89.4	9.2%	90.9	94.4	4.0%	176.0	178.7	1.6%	348.7	362.5	4.0%
November		19.4	23.2	19.5%	22.6	24.8	9.9%	44.5	46.0	3.5%	86.4	94.0	8.8%
	YTD	101.3	112.6	11.2%	113.4	119.2	5.1%	220.4	224.8	2.0%	435.1	456.6	4.9%
December		20.1	23.1	14.9%	21.9	24.1	9.9%	44.2	46.6	5.4%	86.2	93.8	8.8%
	YTD	121.4	135.7	11.8%	135.3	143.3	5.9%	264.6	271.3	2.5%	521.3	550.4	5.6%
January		19.7	22.0	11.9%	20.4	22.7	11.3%	41.0	43.9	7.0%	81.0	88.6	9.3%
	YTD	141.1	157.7	11.8%	155.7	166.0	6.6%	305.6	315.2	3.1%	602.4	638.9	6.1%
February		18.2	20.5	12.6%	18.8	19.2	2.5%	35.9	37.9	5.6%	72.9	77.7	6.6%
	YTD	159.3	178.2	11.9%	174.5	185.2	6.2%	341.5	353.1	3.4%	675.3	716.6	6.1%
March		19.8	21.3	7.8%	19.7	19.6	-0.8%	38.8	39.4	1.3%	78.4	80.3	2.4%
	YTD	179.1	199.6	11.4%	194.2	204.8	5.5%	380.4	392.5	3.2%	753.6	796.9	5.7%
April		19.7	21.5	9.3%	18.8	18.1	-4.0%	37.3	38.7	3.8%	75.8	78.3	3.3%
	YTD	198.7	221.1	11.2%	213.0	222.9	4.6%	417.7	431.2	3.2%	829.4	875.2	5.5%
May		21.5	23.1	7.8%	19.4	18.9	-2.6%	39.1	40.5	3.8%	80.0	82.6	3.3%
	YTD	220.2	244.2	10.9%	232.4	241.8	4.0%	456.8	471.8	3.3%	909.4	957.8	5.3%
June		21.5			19.6			39.3			80.4		
	YTD	241.7			252.1			496.1			989.9		
Total		241.7			252.1			496.1			989.9		

Produced by the Economics, Data and Insights team at Dairy Australia, Source: Dairy Manufacturers

Please Note: These reports contain data based on a combination of voluntary direct reporting from processors, and data sourced from government agencies. Retrospective adjustments are possible if new or revised data is received.

Milk production report (Litres '000s)

New South Wales

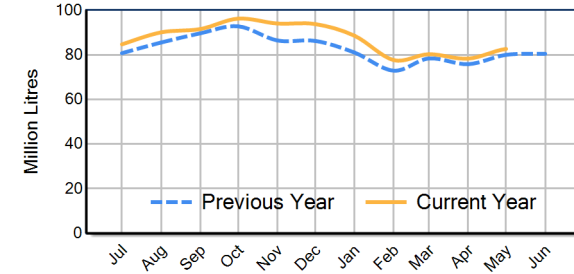


		Inland/Central	North Coast	Southern	NSW
Month	May-22	20,636	17,287	38,790	76,713
	May-23	21,470	19,442	39,075	79,987
	May-24	23,135	18,944	40,543	82,622
	% change	7.8%	-2.6%	3.8%	3.3%
Region Share	May-23	26.8%	24.3%	48.9%	100.0%
	May-24	28.0%	22.9%	49.1%	100.0%
		Inland/Central	North Coast	Southern	NSW
Year To Date	2021/2022	238,201	264,765	491,704	994,670
	2022/2023	220,208	232,449	456,761	909,417
	2023/2024	244,190	241,819	471,777	957,786
	% change	10.9%	4.0%	3.3%	5.3%
Region Share	2022/2023	24.2%	25.6%	50.2%	100.0%
	2023/2024	25.5%	25.2%	49.3%	100.0%
		Inland/Central	North Coast	Southern	NSW
Total	2022/2023	241,743	252,063	496,057	989,863
	Region Share	24.4%	25.5%	50.1%	100.0%

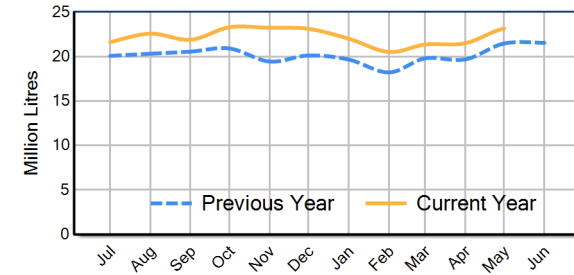
Average Milkfat & Protein (%)

		Inland/Central	North Coast	Southern	NSW
Milkfat	May-22	4.13%	4.30%	4.26%	4.23%
	May-23	4.08%	4.28%	4.31%	4.24%
	May-24	4.00%	4.27%	4.33%	4.22%
	% change 23/24	-1.9%	-0.4%	0.3%	-0.5%
		Inland/Central	North Coast	Southern	NSW
Protein	May-22	3.38%	3.36%	3.47%	3.42%
	May-23	3.41%	3.48%	3.53%	3.48%
	May-24	3.42%	3.49%	3.56%	3.50%
	% change 23/24	0.4%	0.2%	0.8%	0.5%

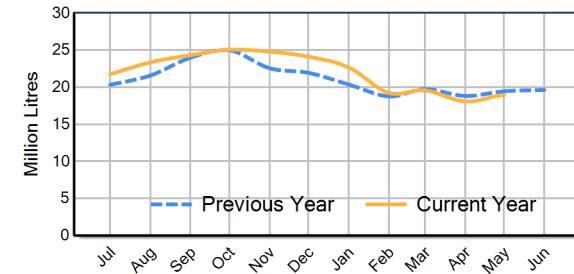
NSW Milk Production - Total Regions



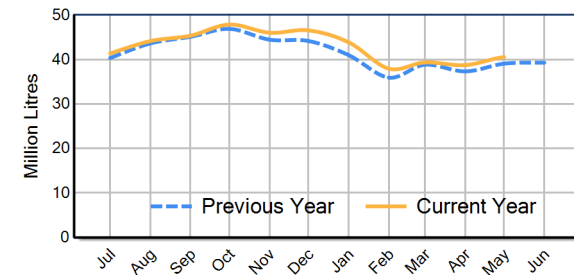
NSW Milk Production - Inland/Central Region



NSW Milk Production - North Coast Region



NSW Milk Production - Southern Region



Please note: These reports contain data based on a combination of voluntary direct reporting from processors, and data sourced from government agencies. Retrospective adjustments are possible if new or revised data is received.