

# Victoria Milk Production

## 23/24 by Region

### (Million Litres)



		Eastern			Northern			Western			Victoria		
		22/23	23/24	Var %	22/23	23/24	Var %	22/23	23/24	Var %	22/23	23/24	Var %
July		106.4	114.8	7.9%	114.6	109.1	-4.7%	165.4	157.4	-4.8%	386.4	381.3	-1.3%
	YTD	106.4	114.8	7.9%	114.6	109.1	-4.7%	165.4	157.4	-4.8%	386.4	381.3	-1.3%
August		144.8	151.3	4.5%	124.4	121.8	-2.1%	181.4	172.8	-4.7%	450.6	445.9	-1.0%
	YTD	251.3	266.1	5.9%	239.0	230.9	-3.4%	346.7	330.2	-4.8%	837.0	827.3	-1.2%
September		189.7	192.6	1.6%	147.2	146.4	-0.5%	190.9	186.1	-2.5%	527.7	525.1	-0.5%
	YTD	441.0	458.8	4.0%	386.2	377.3	-2.3%	537.6	516.3	-4.0%	1,364.7	1,352.4	-0.9%
October		216.8	218.4	0.7%	157.7	161.5	2.4%	201.2	203.0	0.9%	575.7	582.9	1.2%
	YTD	657.8	677.2	2.9%	543.8	538.8	-0.9%	738.8	719.3	-2.6%	1,940.4	1,935.3	-0.3%
November		197.8	211.1	6.7%	142.5	152.8	7.2%	179.0	189.9	6.1%	519.3	553.9	6.6%
	YTD	855.6	888.3	3.8%	686.3	691.6	0.8%	917.8	909.2	-0.9%	2,459.8	2,489.2	1.2%
December		190.2	189.7	-0.3%	136.6	145.6	6.6%	172.2	169.5	-1.6%	499.0	504.8	1.2%
	YTD	1,045.8	1,078.0	3.1%	822.9	837.2	1.7%	1,090.0	1,078.7	-1.0%	2,958.8	2,993.9	1.2%
January		159.6	168.6	5.7%	120.0	130.6	8.9%	143.7	148.2	3.1%	423.3	447.4	5.7%
	YTD	1,205.4	1,246.6	3.4%	942.9	967.8	2.6%	1,233.7	1,226.9	-0.6%	3,382.0	3,441.4	1.8%
February		121.2	135.4	11.7%	94.9	105.5	11.2%	107.6	116.0	7.8%	323.7	356.9	10.3%
	YTD	1,326.6	1,382.0	4.2%	1,037.8	1,073.4	3.4%	1,341.4	1,342.9	0.1%	3,705.7	3,798.3	2.5%
March		124.0			99.4			110.3			333.8		
	YTD	1,450.6			1,137.2			1,451.7			4,039.5		
April		123.7			105.7			110.6			340.1		
	YTD	1,574.3			1,242.9			1,562.3			4,379.5		
May		129.1			123.4			135.7			388.2		
	YTD	1,703.4			1,366.3			1,698.0			4,767.7		
June		112.6			111.9			148.8			373.3		
	YTD	1,816.0			1,478.2			1,846.9			5,141.0		
<b>Total</b>		<b>1,816.0</b>			<b>1,478.2</b>			<b>1,846.9</b>			<b>5,141.0</b>		

Produced by the Economics, Data and Insights team at Dairy Australia, Source: Dairy Manufacturers

Please Note: These reports contain data based on a combination of voluntary direct reporting from processors, and data sourced from government agencies. Retrospective adjustments are possible if new or revised data is received.

# Milk production report (Litres '000s)

## Victoria

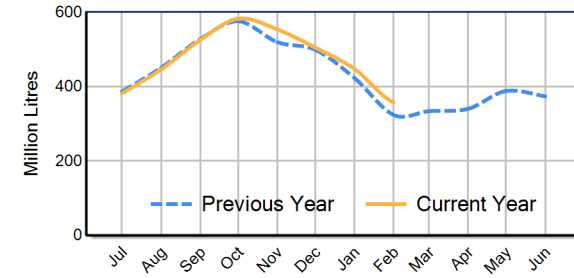


		Eastern	Northern	Western	VIC
Month	February-22	132,349	105,255	110,208	347,813
	February-23	121,180	94,868	107,642	323,690
	February-24	135,352	105,522	116,043	356,917
	<b>% change</b>	<b>11.7%</b>	<b>11.2%</b>	<b>7.8%</b>	<b>10.3%</b>
Region Share	February-23	37.4%	29.3%	33.3%	100.0%
	February-24	37.9%	29.6%	32.5%	100.0%
Year To Date		Eastern	Northern	Western	VIC
	2021/2022	1,444,434	1,122,689	1,424,658	3,991,782
	2022/2023	1,326,603	1,037,757	1,341,369	3,705,729
	2023/2024	1,381,992	1,073,351	1,342,935	3,798,279
	<b>% change</b>	<b>4.2%</b>	<b>3.4%</b>	<b>0.1%</b>	<b>2.5%</b>
Region Share	2022/2023	35.8%	28.0%	36.2%	100.0%
	2023/2024	36.4%	28.3%	35.4%	100.0%
Total		Eastern	Northern	Western	VIC
	2022/2023	1,815,995	1,478,179	1,846,866	5,141,041
	<b>Region Share</b>	<b>35.3%</b>	<b>28.8%</b>	<b>35.9%</b>	<b>100.0%</b>

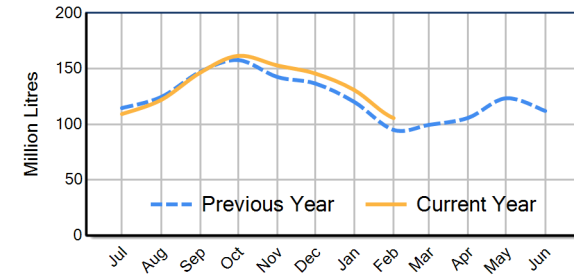
## Average Milkfat & Protein (%)

		Eastern	Northern	Western	VIC
Milkfat	February-22	4.43%	4.26%	4.51%	4.40%
	February-23	4.44%	4.28%	4.52%	4.42%
	February-24	4.37%	4.28%	4.48%	4.38%
	<b>% change 23/24</b>	<b>-1.6%</b>	<b>-0.1%</b>	<b>-0.9%</b>	<b>-1.0%</b>
Protein		Eastern	Northern	Western	VIC
	February-22	3.40%	3.35%	3.45%	3.40%
	February-23	3.41%	3.36%	3.48%	3.42%
	February-24	3.42%	3.38%	3.47%	3.42%
	<b>% change 23/24</b>	<b>0.1%</b>	<b>0.5%</b>	<b>-0.3%</b>	<b>0.1%</b>

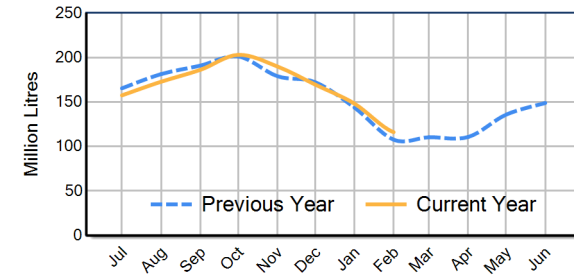
VIC Milk Production - Total Regions



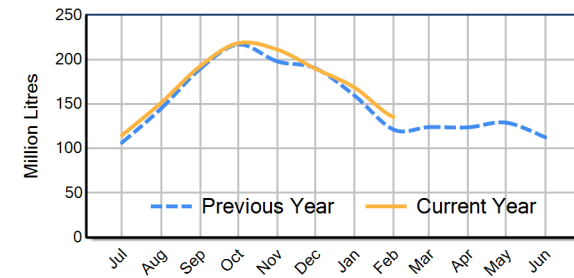
VIC Milk Production - Northern Region



VIC Milk Production - Western Region



VIC Milk Production - Eastern Region



Please note: These reports contain data based on a combination of voluntary direct reporting from processors, and data sourced from government agencies. Retrospective adjustments are possible if new or revised data is received.