

New South Wales Milk Production

23/24 by Region

(Million Litres)



		Inland/Central			North Coast			Southern			New South Wales		
		22/23	23/24	Var %	22/23	23/24	Var %	22/23	23/24	Var %	22/23	23/24	Var %
July		20.1	21.6	7.6%	20.3	21.7	6.9%	40.3	41.4	2.5%	80.7	84.7	4.9%
	YTD	20.1	21.6	7.6%	20.3	21.7	6.9%	40.3	41.4	2.5%	80.7	84.7	4.9%
August		20.3	22.6	11.1%	21.6	23.4	8.3%	43.6	44.1	1.2%	85.5	90.1	5.3%
	YTD	40.4	44.2	9.4%	41.9	45.1	7.6%	84.0	85.5	1.8%	166.3	174.8	5.1%
September		20.6	21.9	6.5%	24.0	24.3	1.4%	45.1	45.4	0.6%	89.6	91.6	2.1%
	YTD	60.9	66.1	8.4%	65.9	69.4	5.3%	129.1	130.9	1.4%	255.9	266.3	4.1%
October		20.9	23.3	11.4%	25.0	25.1	0.3%	46.9	47.9	2.1%	92.8	96.2	3.7%
	YTD	81.8	89.4	9.2%	90.9	94.4	4.0%	176.0	178.7	1.6%	348.7	362.5	4.0%
November		19.4	23.2	19.5%	22.6	24.8	9.9%	44.5	46.0	3.5%	86.4	94.0	8.8%
	YTD	101.3	112.6	11.2%	113.4	119.2	5.1%	220.4	224.8	2.0%	435.1	456.6	4.9%
December		20.1	23.1	14.9%	21.9	24.1	9.9%	44.2	46.6	5.4%	86.2	93.8	8.8%
	YTD	121.4	135.7	11.8%	135.3	143.3	5.9%	264.6	271.3	2.5%	521.3	550.4	5.6%
January		19.7	22.0	11.9%	20.4	22.7	11.3%	41.0	43.9	7.0%	81.0	88.6	9.3%
	YTD	141.1	157.7	11.8%	155.7	166.0	6.6%	305.6	315.2	3.1%	602.4	638.9	6.1%
February		18.2	20.5	12.6%	18.8	19.2	2.5%	35.9	37.9	5.6%	72.9	77.7	6.6%
	YTD	159.3	178.2	11.9%	174.5	185.2	6.2%	341.5	353.1	3.4%	675.3	716.6	6.1%
March		19.8			19.7			38.8			78.4		
	YTD	179.1			194.2			380.4			753.6		
April		19.7			18.8			37.3			75.8		
	YTD	198.7			213.0			417.7			829.4		
May		21.5			19.4			39.1			80.0		
	YTD	220.2			232.4			456.8			909.4		
June		21.5			19.6			39.3			80.4		
	YTD	241.7			252.1			496.1			989.9		
Total		241.7			252.1			496.1			989.9		

Produced by the Economics, Data and Insights team at Dairy Australia, Source: Dairy Manufacturers

Please Note: These reports contain data based on a combination of voluntary direct reporting from processors, and data sourced from government agencies. Retrospective adjustments are possible if new or revised data is received.

Milk production report (Litres '000s)

New South Wales

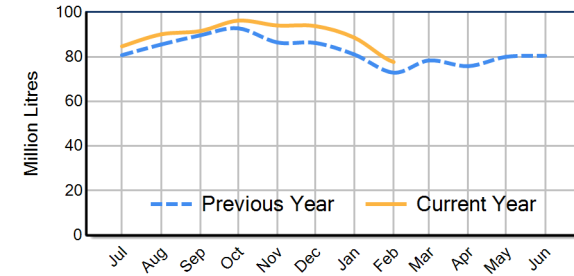


		Inland/Central	North Coast	Southern	NSW
Month	February-22	19,111	22,035	38,668	79,814
	February-23	18,206	18,755	35,930	72,891
	February-24	20,507	19,221	37,942	77,669
	% change	12.6%	2.5%	5.6%	6.6%
Region Share	February-23	25.0%	25.7%	49.3%	100.0%
	February-24	26.4%	24.7%	48.9%	100.0%
		Inland/Central	North Coast	Southern	NSW
Year To Date	2021/2022	177,967	209,593	375,326	762,886
	2022/2023	159,272	174,460	341,527	675,259
	2023/2024	178,215	185,241	353,143	716,599
	% change	11.9%	6.2%	3.4%	6.1%
Region Share	2022/2023	23.6%	25.8%	50.6%	100.0%
	2023/2024	24.9%	25.8%	49.3%	100.0%
		Inland/Central	North Coast	Southern	NSW
Total	2022/2023	241,743	252,063	496,057	989,863
	Region Share	24.4%	25.5%	50.1%	100.0%

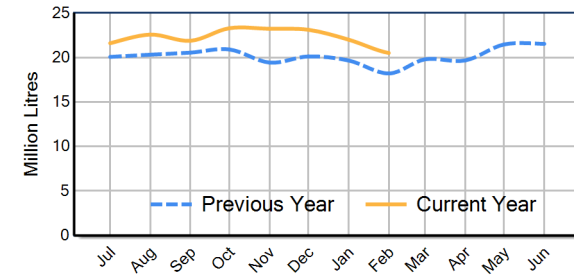
Average Milkfat & Protein (%)

		Inland/Central	North Coast	Southern	NSW
Milkfat	February-22	4.04%	3.74%	4.12%	4.00%
	February-23	4.01%	4.04%	4.13%	4.07%
	February-24	3.89%	4.00%	4.09%	4.02%
	% change 23/24	-2.9%	-0.9%	-0.9%	-1.5%
		Inland/Central	North Coast	Southern	NSW
Protein	February-22	3.26%	3.00%	3.32%	3.22%
	February-23	3.26%	3.27%	3.36%	3.31%
	February-24	3.27%	3.23%	3.34%	3.29%
	% change 23/24	0.4%	-1.2%	-0.5%	-0.5%

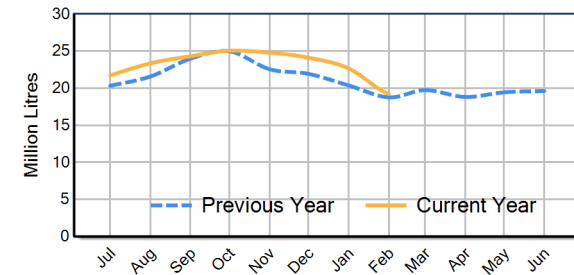
NSW Milk Production - Total Regions



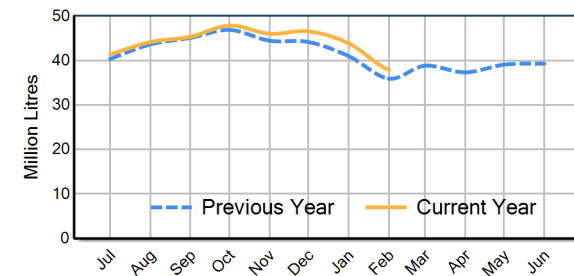
NSW Milk Production - Inland/Central Region



NSW Milk Production - North Coast Region



NSW Milk Production - Southern Region



Please note: These reports contain data based on a combination of voluntary direct reporting from processors, and data sourced from government agencies. Retrospective adjustments are possible if new or revised data is received.