

# Victoria Milk Production

## 23/24 by Region

### (Million Litres)



		Eastern			Northern			Western			Victoria		
		22/23	23/24	Var %	22/23	23/24	Var %	22/23	23/24	Var %	22/23	23/24	Var %
July		106.4	114.8	7.9%	114.6	109.1	-4.7%	165.4	157.4	-4.8%	386.4	381.3	-1.3%
	YTD	106.4	114.8	7.9%	114.6	109.1	-4.7%	165.4	157.4	-4.8%	386.4	381.3	-1.3%
August		144.8	151.3	4.5%	124.4	121.8	-2.1%	181.4	172.8	-4.7%	450.6	445.9	-1.0%
	YTD	251.3	266.1	5.9%	239.0	230.9	-3.4%	346.7	330.2	-4.8%	837.0	827.3	-1.2%
September		189.7	192.6	1.6%	147.2	146.4	-0.5%	190.9	186.1	-2.5%	527.7	525.1	-0.5%
	YTD	441.0	458.8	4.0%	386.2	377.3	-2.3%	537.6	516.3	-4.0%	1,364.7	1,352.4	-0.9%
October		216.8	218.4	0.7%	157.7	161.5	2.4%	201.2	203.0	0.9%	575.7	582.9	1.2%
	YTD	657.8	677.2	2.9%	543.8	538.8	-0.9%	738.8	719.3	-2.6%	1,940.4	1,935.3	-0.3%
November		197.8	211.1	6.7%	142.5	152.8	7.2%	179.0	189.9	6.1%	519.3	553.9	6.6%
	YTD	855.6	888.3	3.8%	686.3	691.6	0.8%	917.8	909.2	-0.9%	2,459.8	2,489.2	1.2%
December		190.2	189.7	-0.3%	136.6	145.6	6.6%	172.2	169.5	-1.6%	499.0	504.8	1.2%
	YTD	1,045.8	1,078.0	3.1%	822.9	837.2	1.7%	1,090.0	1,078.7	-1.0%	2,958.8	2,994.0	1.2%
January		159.6	168.6	5.7%	120.0	130.6	8.9%	143.7	148.2	3.1%	423.3	447.4	5.7%
	YTD	1,205.4	1,246.7	3.4%	942.9	967.8	2.6%	1,233.7	1,226.9	-0.6%	3,382.0	3,441.4	1.8%
February		121.2	135.4	11.7%	94.9	105.5	11.2%	107.6	116.0	7.8%	323.7	356.9	10.3%
	YTD	1,326.6	1,382.0	4.2%	1,037.8	1,073.4	3.4%	1,341.4	1,342.9	0.1%	3,705.7	3,798.3	2.5%
March		124.0	131.3	5.9%	99.4	107.3	7.9%	110.3	109.0	-1.2%	333.8	347.6	4.2%
	YTD	1,450.6	1,513.3	4.3%	1,137.2	1,180.7	3.8%	1,451.7	1,451.9	0.0%	4,039.5	4,145.9	2.6%
April		123.7	127.4	3.0%	105.7	115.9	9.6%	110.6	110.5	-0.1%	340.1	353.8	4.0%
	YTD	1,574.3	1,640.7	4.2%	1,242.9	1,296.6	4.3%	1,562.3	1,562.4	0.0%	4,379.5	4,499.7	2.7%
May		129.1	143.7	11.3%	123.4	128.4	4.1%	135.7	133.3	-1.7%	388.2	405.4	4.4%
	YTD	1,703.4	1,784.4	4.8%	1,366.3	1,424.9	4.3%	1,698.0	1,695.8	-0.1%	4,767.7	4,905.1	2.9%
June		112.6			111.9			148.8			373.3		
	YTD	1,816.0			1,478.2			1,846.9			5,141.0		
<b>Total</b>		<b>1,816.0</b>			<b>1,478.2</b>			<b>1,846.9</b>			<b>5,141.0</b>		

Produced by the Economics, Data and Insights team at Dairy Australia, Source: Dairy Manufacturers

Please Note: These reports contain data based on a combination of voluntary direct reporting from processors, and data sourced from government agencies. Retrospective adjustments are possible if new or revised data is received.

# Milk production report (Litres '000s)

## Victoria

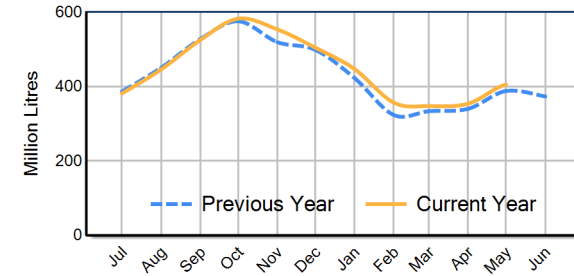


		Eastern	Northern	Western	VIC
Month	May-22	128,933	129,235	131,146	389,315
	May-23	129,092	123,358	135,708	388,158
	May-24	143,688	128,362	133,346	405,395
	<b>% change</b>	<b>11.3%</b>	<b>4.1%</b>	<b>-1.7%</b>	<b>4.4%</b>
Region Share	May-23	33.3%	31.8%	35.0%	100.0%
	May-24	35.4%	31.7%	32.9%	100.0%
		Eastern	Northern	Western	VIC
Year To Date	2021/2022	1,835,551	1,476,189	1,781,046	5,092,786
	2022/2023	1,703,421	1,366,252	1,698,022	4,767,695
	2023/2024	1,784,418	1,424,925	1,695,768	4,905,111
	<b>% change</b>	<b>4.8%</b>	<b>4.3%</b>	<b>-0.1%</b>	<b>2.9%</b>
Region Share	2022/2023	35.7%	28.7%	35.6%	100.0%
	2023/2024	36.4%	29.0%	34.6%	100.0%
		Eastern	Northern	Western	VIC
Total	2022/2023	1,815,995	1,478,179	1,846,866	5,141,041
	<b>Region Share</b>	<b>35.3%</b>	<b>28.8%</b>	<b>35.9%</b>	<b>100.0%</b>

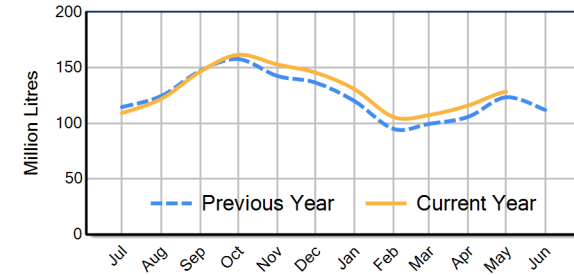
## Average Milkfat & Protein (%)

		Eastern	Northern	Western	VIC
Milkfat	May-22	4.58%	4.41%	4.47%	4.49%
	May-23	4.55%	4.39%	4.40%	4.45%
	May-24	4.52%	4.47%	4.49%	4.49%
	<b>% change 23/24</b>	<b>-0.6%</b>	<b>1.6%</b>	<b>2.1%</b>	<b>1.1%</b>
		Eastern	Northern	Western	VIC
Protein	May-22	3.59%	3.52%	3.43%	3.51%
	May-23	3.62%	3.54%	3.47%	3.55%
	May-24	3.64%	3.59%	3.48%	3.57%
	<b>% change 23/24</b>	<b>0.4%</b>	<b>1.3%</b>	<b>0.2%</b>	<b>0.7%</b>

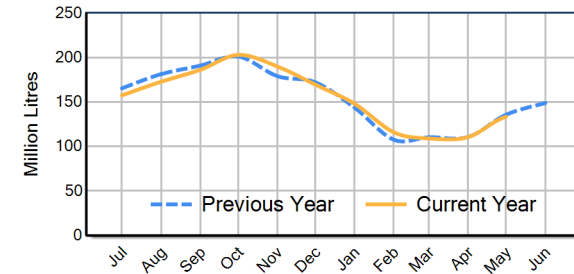
VIC Milk Production - Total Regions



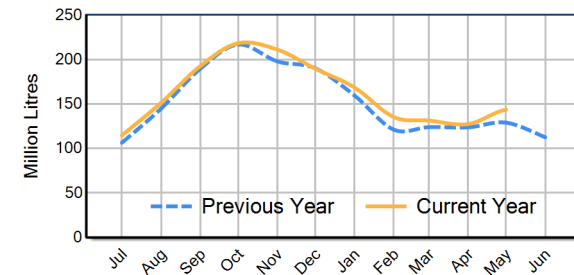
VIC Milk Production - Northern Region



VIC Milk Production - Western Region



VIC Milk Production - Eastern Region



Please note: These reports contain data based on a combination of voluntary direct reporting from processors, and data sourced from government agencies. Retrospective adjustments are possible if new or revised data is received.