

New South Wales Milk Production

22/23 by Region

(Million Litres)



		Inland/Central			North Coast			Southern			New South Wales		
		21/22	22/23	Var %	21/22	22/23	Var %	21/22	22/23	Var %	21/22	22/23	Var %
July		22.6	20.1	-11.0%	25.0	20.3	-18.6%	44.8	40.3	-9.9%	92.3	80.7	-12.6%
	YTD	22.6	20.1	-11.0%	25.0	20.3	-18.6%	44.8	40.3	-9.9%	92.3	80.7	-12.6%
August		22.7	20.3	-10.5%	27.4	21.6	-21.2%	48.4	43.6	-9.8%	98.4	85.5	-13.1%
	YTD	45.3	40.4	-10.8%	52.3	41.9	-20.0%	93.2	84.0	-9.9%	190.8	166.3	-12.9%
September		23.1	20.6	-11.0%	28.3	24.0	-15.1%	48.9	45.1	-7.7%	100.2	89.6	-10.5%
	YTD	68.4	60.9	-10.8%	80.6	65.9	-18.3%	142.0	129.1	-9.1%	291.0	255.9	-12.1%
October		23.6	20.9	-11.6%	29.5	25.0	-15.3%	51.9	46.9	-9.6%	105.0	92.8	-11.6%
	YTD	92.0	81.8	-11.0%	110.1	90.9	-17.5%	193.9	176.0	-9.2%	396.0	348.7	-11.9%
November		22.9	19.4	-15.2%	27.6	22.6	-18.2%	49.0	44.5	-9.3%	99.5	86.4	-13.1%
	YTD	114.9	101.3	-11.9%	137.6	113.4	-17.6%	242.9	220.4	-9.2%	495.4	435.1	-12.2%
December		22.4	20.1	-10.3%	25.8	21.9	-15.0%	48.4	44.2	-8.8%	96.7	86.2	-10.8%
	YTD	137.3	121.4	-11.6%	163.5	135.3	-17.2%	291.3	264.6	-9.2%	592.1	521.3	-11.9%
January		21.5	19.7	-8.6%	24.1	20.4	-15.5%	45.4	41.0	-9.6%	91.0	81.0	-11.0%
	YTD	158.9	141.1	-11.2%	187.6	155.7	-17.0%	336.7	305.6	-9.2%	683.1	602.4	-11.8%
February		19.1	18.2	-4.7%	22.0	18.8	-14.9%	38.7	35.9	-7.1%	79.8	72.9	-8.7%
	YTD	178.0	159.3	-10.5%	209.6	174.5	-16.8%	375.3	341.5	-9.0%	762.9	675.3	-11.5%
March		20.2	19.8	-1.8%	20.3	19.7	-2.9%	40.2	38.8	-3.4%	80.7	78.4	-2.9%
	YTD	198.1	179.1	-9.6%	229.9	194.2	-15.5%	415.5	380.4	-8.5%	843.6	753.6	-10.7%
April		19.4	19.7	1.2%	17.5	18.8	7.2%	37.4	37.3	-0.1%	74.4	75.8	1.9%
	YTD	217.6	198.7	-8.7%	247.5	213.0	-13.9%	452.9	417.7	-7.8%	918.0	829.4	-9.6%
May		20.6	21.5	4.0%	17.3	19.4	12.5%	38.8	39.1	0.7%	76.7	80.0	4.3%
	YTD	238.2	220.2	-7.6%	264.8	232.4	-12.2%	491.7	456.8	-7.1%	994.7	909.4	-8.6%
June		21.3	21.5	1.2%	17.8	19.6	10.3%	38.7	39.3	1.6%	77.8	80.4	3.5%
	YTD	259.5	241.7	-6.8%	282.6	252.1	-10.8%	530.4	496.1	-6.5%	1,072.4	989.9	-7.7%
Total		259.5	241.7		282.6	252.1		530.4	496.1		1,072.4	989.9	

Produced by the Economics, Data and Insights team at Dairy Australia, Source: Dairy Manufacturers

Please Note: These reports contain data based on a combination of voluntary direct reporting from processors, and data sourced from government agencies. Retrospective adjustments are possible if new or revised data is received.

Milk production report (Litres '000s)

New South Wales

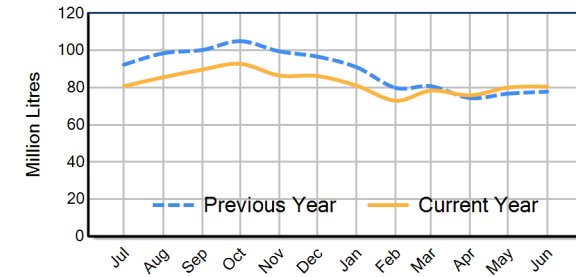


		Inland/Central	North Coast	Southern	NSW
Month	June-21	21,957	20,996	43,685	86,638
	June-22	21,279	17,788	38,687	77,754
	June-23	21,535	19,614	39,297	80,446
	% change	1.2%	10.3%	1.6%	3.5%
Region Share	June-22	27.4%	22.9%	49.8%	100.0%
	June-23	26.8%	24.4%	48.8%	100.0%
Year To Date		Inland/Central	North Coast	Southern	NSW
	2020/2021	258,630	275,533	541,282	1,075,444
	2021/2022	259,480	282,553	530,391	1,072,424
	2022/2023	241,743	252,063	496,057	989,863
	% change	-6.8%	-10.8%	-6.5%	-7.7%
Region Share	2021/2022	24.2%	26.3%	49.5%	100.0%
	2022/2023	24.4%	25.5%	50.1%	100.0%
Total		Inland/Central	North Coast	Southern	NSW
	2021/2022				
	Region Share	24.2%	26.3%	49.5%	100.0%

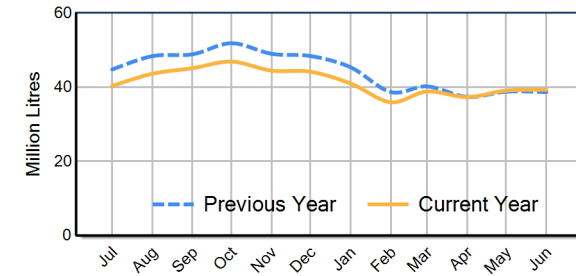
Average Milkfat & Protein (%)

		Inland/Central	North Coast	Southern	NSW
Milkfat	June-21	4.07%	4.20%	4.26%	4.20%
	June-22	4.07%	4.25%	4.27%	4.21%
	June-23	4.10%	4.24%	4.28%	4.22%
	% change 22/23	0.9%	-0.4%	0.3%	0.3%
Protein		Inland/Central	North Coast	Southern	NSW
	June-21	3.35%	3.42%	3.47%	3.43%
	June-22	3.40%	3.42%	3.48%	3.44%
	June-23	3.39%	3.47%	3.48%	3.45%
	% change 22/23	-0.3%	1.3%	-0.1%	0.2%

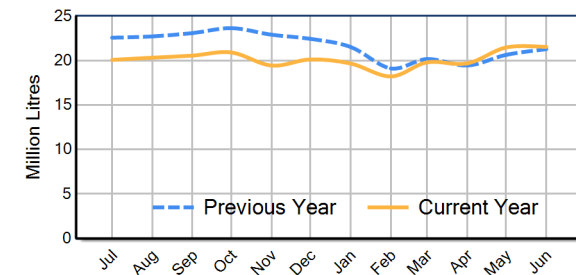
NSW Milk Production - Total Regions



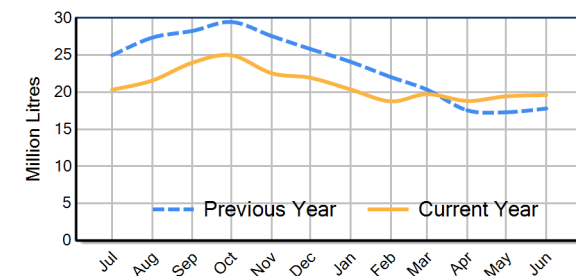
NSW Milk Production - Southern Region



NSW Milk Production - Inland/Central Region



NSW Milk Production - North Coast Region



Please note: These reports contain data based on a combination of voluntary direct reporting from processors, and data sourced from government agencies. Retrospective adjustments are possible if new or revised data is received.