

# Victoria Milk Production 20/21 by Region (Million Litres)



		Eastern			Northern			Western			Victoria		
		19/20	20/21	Var %	19/20	20/21	Var %	19/20	20/21	Var %	19/20	20/21	Var %
July		113.5	118.9	4.8%	118.8	124.6	4.8%	169.4	173.6	2.5%	401.7	417.0	3.8%
	YTD	113.5	118.9	4.8%	118.8	124.6	4.8%	169.4	173.6	2.5%	401.7	417.0	3.8%
August		150.3	155.1	3.2%	133.0	134.3	1.0%	183.2	195.6	6.8%	466.5	485.0	4.0%
	YTD	263.8	274.0	3.9%	251.8	258.9	2.8%	352.6	369.2	4.7%	868.1	902.0	3.9%
September		206.4			161.9			204.8			573.1		
	YTD	470.2			413.7			557.3			1,441.3		
October		237.7			177.7			214.7			630.1		
	YTD	707.9			591.4			772.1			2,071.4		
November		221.0			162.2			202.3			585.4		
	YTD	928.9			753.6			974.4			2,656.8		
December		214.7			153.7			191.9			560.3		
	YTD	1,143.5			907.3			1,166.3			3,217.1		
January		177.5			135.4			144.4			457.3		
	YTD	1,321.0			1,042.7			1,310.7			3,674.4		
February		148.0			107.8			115.5			371.3		
	YTD	1,469.0			1,150.5			1,426.2			4,045.7		
March		151.6			114.6			115.6			381.8		
	YTD	1,620.6			1,265.0			1,541.8			4,427.5		
April		141.8			126.1			105.8			373.7		
	YTD	1,762.4			1,391.1			1,647.6			4,801.2		
May		144.5			133.8			134.3			412.6		
	YTD	1,907.0			1,524.9			1,782.0			5,213.8		
June		119.6			127.1			158.2			404.9		
	YTD	2,026.5			1,652.0			1,940.2			5,618.7		
<b>Total</b>		<b>2,026.5</b>			<b>1,652.0</b>			<b>1,940.2</b>			<b>5,618.7</b>		

Produced by Trade and Strategy, Dairy Australia Limited, Source: Dairy Manufacturers

Please Note: These reports contain data based on a combination of voluntary direct reporting from processors, and data sourced from government agencies. Retrospective adjustments are possible if new or revised data is received.

# Milk production report (Litres '000s)

## Victoria

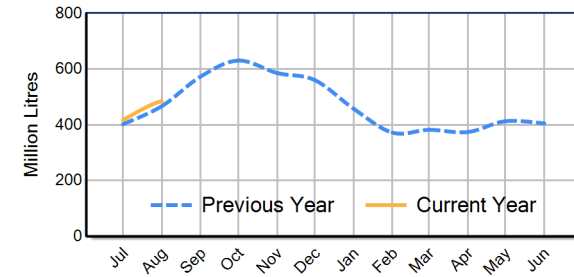


		Eastern	Northern	Western	VIC
Month	August-18	152,950	144,717	197,056	494,724
	August-19	150,349	132,962	183,156	466,468
	August-20	155,124	134,311	195,594	485,029
	<b>% change</b>	<b>3.2%</b>	<b>1.0%</b>	<b>6.8%</b>	<b>4.0%</b>
Region Share	August-19	32.2%	28.5%	39.3%	100.0%
	August-20	32.0%	27.7%	40.3%	100.0%
Year To Date		Eastern	Northern	Western	VIC
	2018/2019	267,452	276,020	381,766	925,237
	2019/2020	263,804	251,773	352,559	868,136
	2020/2021	274,012	258,862	369,174	902,048
	<b>% change</b>	<b>3.9%</b>	<b>2.8%</b>	<b>4.7%</b>	<b>3.9%</b>
Region Share	2019/2020	30.4%	29.0%	40.6%	100.0%
	2020/2021	30.4%	28.7%	40.9%	100.0%
Total		Eastern	Northern	Western	VIC
	2019/2020	2,026,545	1,651,994	1,940,194	5,618,734
	<b>Region Share</b>	<b>36.1%</b>	<b>29.4%</b>	<b>34.5%</b>	<b>100.0%</b>

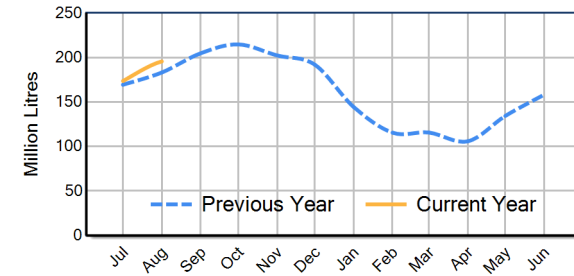
## Average Milkfat & Protein (%)

		Eastern	Northern	Western	VIC
Milkfat	August-18	3.94%	3.82%	3.82%	3.86%
	August-19	3.97%	3.85%	3.87%	3.89%
	August-20	4.17%	4.09%	4.00%	4.08%
	<b>% change 20/21</b>	<b>5.0%</b>	<b>6.4%</b>	<b>3.5%</b>	<b>4.8%</b>
Protein		Eastern	Northern	Western	VIC
	August-18	3.48%	3.48%	3.42%	3.45%
	August-19	3.50%	3.53%	3.41%	3.47%
	August-20	3.47%	3.55%	3.43%	3.48%
	<b>% change 20/21</b>	<b>-0.8%</b>	<b>0.7%</b>	<b>0.6%</b>	<b>0.1%</b>

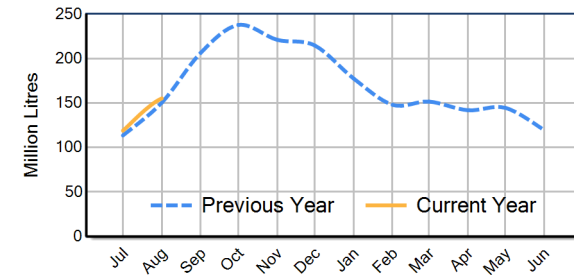
VIC Milk Production - Total Regions



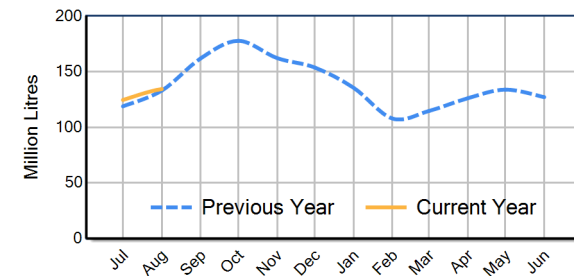
VIC Milk Production - Western Region



VIC Milk Production - Eastern Region



VIC Milk Production - Northern Region



Please note: These reports contain data based on a combination of voluntary direct reporting from processors, and data sourced from government agencies. Retrospective adjustments are possible if new or revised data is received.