

New South Wales Milk Production

20/21 by Region

(Million Litres)



		Inland/Central			North Coast			Southern			New South Wales		
		19/20	20/21	Var %	19/20	20/21	Var %	19/20	20/21	Var %	19/20	20/21	Var %
July		21.0	22.2	5.6%	22.4	22.8	1.6%	43.0	43.0	0.0%	86.4	88.0	1.8%
	<i>YTD</i>	<i>21.0</i>	<i>22.2</i>	<i>5.6%</i>	<i>22.4</i>	<i>22.8</i>	<i>1.6%</i>	<i>43.0</i>	<i>43.0</i>	<i>0.0%</i>	<i>86.4</i>	<i>88.0</i>	<i>1.8%</i>
August		21.6	22.6	4.7%	25.2	25.1	-0.4%	46.0	47.0	2.3%	92.7	94.7	2.1%
	<i>YTD</i>	<i>42.6</i>	<i>44.8</i>	<i>5.1%</i>	<i>47.6</i>	<i>47.9</i>	<i>0.6%</i>	<i>88.9</i>	<i>90.0</i>	<i>1.2%</i>	<i>179.2</i>	<i>182.7</i>	<i>2.0%</i>
September		22.0			24.7			50.3			97.0		
	<i>YTD</i>	<i>64.6</i>			<i>72.3</i>			<i>139.2</i>			<i>276.2</i>		
October		22.9			26.2			49.9			98.9		
	<i>YTD</i>	<i>87.5</i>			<i>98.6</i>			<i>189.1</i>			<i>375.1</i>		
November		21.3			23.2			46.2			90.7		
	<i>YTD</i>	<i>108.7</i>			<i>121.8</i>			<i>235.3</i>			<i>465.8</i>		
December		21.2			21.0			47.3			89.5		
	<i>YTD</i>	<i>129.9</i>			<i>142.8</i>			<i>282.6</i>			<i>555.3</i>		
January		20.4			20.7			42.7			83.8		
	<i>YTD</i>	<i>150.3</i>			<i>163.5</i>			<i>325.3</i>			<i>639.1</i>		
February		18.6			19.3			39.0			77.0		
	<i>YTD</i>	<i>168.8</i>			<i>182.8</i>			<i>364.4</i>			<i>716.0</i>		
March		19.7			19.1			44.0			82.9		
	<i>YTD</i>	<i>188.6</i>			<i>202.0</i>			<i>408.4</i>			<i>798.9</i>		
April		19.3			17.9			39.7			77.0		
	<i>YTD</i>	<i>207.9</i>			<i>219.9</i>			<i>448.2</i>			<i>875.9</i>		
May		21.4			19.1			43.3			83.8		
	<i>YTD</i>	<i>229.2</i>			<i>239.0</i>			<i>491.5</i>			<i>959.7</i>		
June		23.4			20.2			40.5			84.1		
	<i>YTD</i>	<i>252.6</i>			<i>259.1</i>			<i>532.0</i>			<i>1,043.8</i>		
Total		252.6			259.1			532.0			1,043.8		

Produced by Trade and Strategy, Dairy Australia Limited, Source: Dairy Manufacturers

Please Note: *These reports contain data based on a combination of voluntary direct reporting from processors, and data sourced from government agencies. Retrospective adjustments are possible if new or revised data is received.*

Milk production report (Litres '000s)

New South Wales

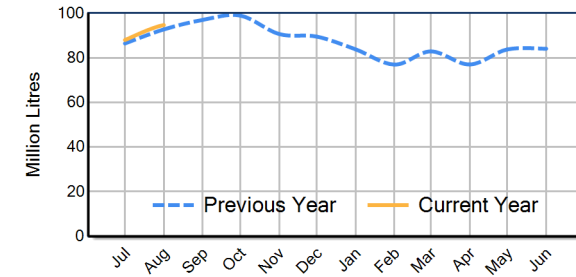


		Inland/Central	North Coast	Southern	NSW
Month	August-18	23,016	25,867	49,763	98,646
	August-19	21,589	25,186	45,964	92,739
	August-20	22,593	25,092	47,030	94,715
	% change	4.7%	-0.4%	2.3%	2.1%
Region Share	August-19	23.3%	27.2%	49.6%	100.0%
	August-20	23.9%	26.5%	49.7%	100.0%
		Inland/Central	North Coast	Southern	NSW
Year To Date	2018/2019	45,718	50,405	98,806	194,929
	2019/2020	42,615	47,611	88,947	179,172
	2020/2021	44,805	47,876	90,019	182,701
	% change	5.1%	0.6%	1.2%	2.0%
Region Share	2019/2020	23.8%	26.6%	49.6%	100.0%
	2020/2021	24.5%	26.2%	49.3%	100.0%
		Inland/Central	North Coast	Southern	NSW
Total	2019/2020	252,622	259,124	532,031	1,043,777
	Region Share	24.2%	24.8%	51.0%	100.0%

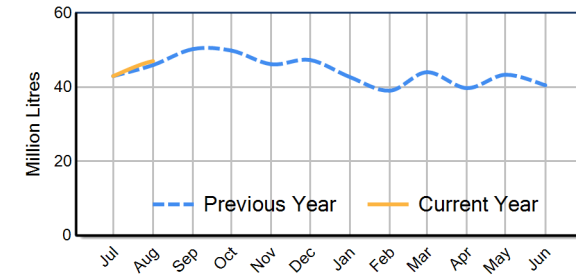
Average Milkfat & Protein (%)

		Inland/Central	North Coast	Southern	NSW
Milkfat	August-18	3.73%	3.88%	3.81%	3.81%
	August-19	3.73%	4.00%	3.87%	3.87%
	August-20	3.81%	4.06%	4.04%	3.99%
	% change 20/21	2.2%	1.6%	4.3%	3.1%
		Inland/Central	North Coast	Southern	NSW
Protein	August-18	3.31%	3.35%	3.34%	3.34%
	August-19	3.32%	3.42%	3.40%	3.38%
	August-20	3.30%	3.46%	3.42%	3.40%
	% change 20/21	-0.7%	1.3%	0.6%	0.5%

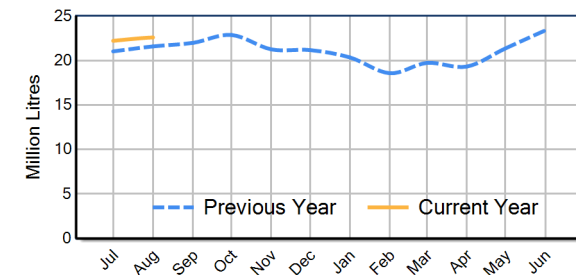
NSW Milk Production - Total Regions



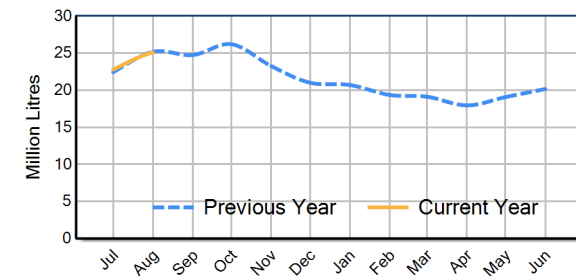
NSW Milk Production - Southern Region



NSW Milk Production - Inland/Central Region



NSW Milk Production - North Coast Region



Please note: These reports contain data based on a combination of voluntary direct reporting from processors, and data sourced from government agencies. Retrospective adjustments are possible if new or revised data is received.