

# New South Wales Milk Production

## 20/21 by Region

### (Million Litres)



		Inland/Central			North Coast			Southern			New South Wales		
		19/20	20/21	Var %	19/20	20/21	Var %	19/20	20/21	Var %	19/20	20/21	Var %
July		21.0	22.2	5.6%	22.4	22.8	1.6%	43.0	43.1	0.3%	86.4	88.1	2.0%
	<i>YTD</i>	<i>21.0</i>	<i>22.2</i>	<i>5.6%</i>	<i>22.4</i>	<i>22.8</i>	<i>1.6%</i>	<i>43.0</i>	<i>43.1</i>	<i>0.3%</i>	<i>86.4</i>	<i>88.1</i>	<i>2.0%</i>
August		21.6			25.2			46.0			92.7		
	<i>YTD</i>	<i>42.6</i>			<i>47.6</i>			<i>88.9</i>			<i>179.2</i>		
September		22.0			24.7			50.3			97.0		
	<i>YTD</i>	<i>64.6</i>			<i>72.3</i>			<i>139.2</i>			<i>276.2</i>		
October		22.9			26.2			49.9			98.9		
	<i>YTD</i>	<i>87.5</i>			<i>98.6</i>			<i>189.1</i>			<i>375.1</i>		
November		21.3			23.2			46.2			90.7		
	<i>YTD</i>	<i>108.7</i>			<i>121.8</i>			<i>235.3</i>			<i>465.8</i>		
December		21.2			21.0			47.3			89.5		
	<i>YTD</i>	<i>129.9</i>			<i>142.8</i>			<i>282.6</i>			<i>555.3</i>		
January		20.4			20.7			42.7			83.8		
	<i>YTD</i>	<i>150.3</i>			<i>163.5</i>			<i>325.3</i>			<i>639.1</i>		
February		18.6			19.3			39.0			77.0		
	<i>YTD</i>	<i>168.8</i>			<i>182.8</i>			<i>364.4</i>			<i>716.0</i>		
March		19.7			19.1			44.0			82.9		
	<i>YTD</i>	<i>188.6</i>			<i>202.0</i>			<i>408.4</i>			<i>798.9</i>		
April		19.3			17.9			39.7			77.0		
	<i>YTD</i>	<i>207.9</i>			<i>219.9</i>			<i>448.2</i>			<i>875.9</i>		
May		21.4			19.1			43.3			83.8		
	<i>YTD</i>	<i>229.2</i>			<i>239.0</i>			<i>491.5</i>			<i>959.7</i>		
June		23.4			20.2			40.5			84.1		
	<i>YTD</i>	<i>252.6</i>			<i>259.1</i>			<i>532.0</i>			<i>1,043.8</i>		
<b>Total</b>		<b>252.6</b>			<b>259.1</b>			<b>532.0</b>			<b>1,043.8</b>		

Produced by Trade and Strategy, Dairy Australia Limited, Source: Dairy Manufacturers

Please Note: These reports contain data based on a combination of voluntary direct reporting from processors, and data sourced from government agencies. Retrospective adjustments are possible if new or revised data is received.

# Milk production report (Litres '000s)

## New South Wales

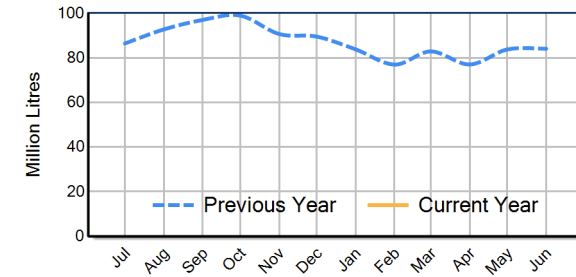


		Inland/Central	North Coast	Southern	NSW
Month	July-18	22,702	24,537	49,043	96,283
	July-19	21,026	22,425	42,982	86,434
	July-20	22,213	22,784	43,128	88,125
	<b>% change</b>	<b>5.6%</b>	<b>1.6%</b>	<b>0.3%</b>	<b>2.0%</b>
Region Share	July-19	24.3%	25.9%	49.7%	100.0%
	July-20	25.2%	25.9%	48.9%	100.0%
		Inland/Central	North Coast	Southern	NSW
Year To Date	2018/2019	22,702	24,537	49,043	96,283
	2019/2020	21,026	22,425	42,982	86,434
	2020/2021	22,213	22,784	43,128	88,125
	<b>% change</b>	<b>5.6%</b>	<b>1.6%</b>	<b>0.3%</b>	<b>2.0%</b>
Region Share	2019/2020	24.3%	25.9%	49.7%	100.0%
	2020/2021	25.2%	25.9%	48.9%	100.0%
		Inland/Central	North Coast	Southern	NSW
Total	2019/2020	252,622	259,124	532,031	1,043,777
	<b>Region Share</b>	<b>24.2%</b>	<b>24.8%</b>	<b>51.0%</b>	<b>100.0%</b>

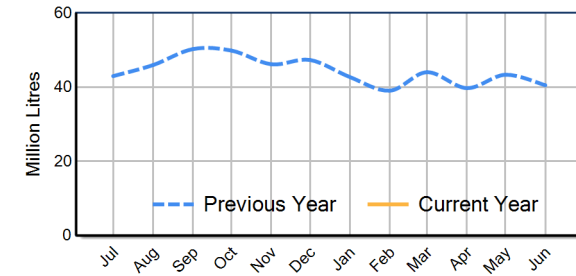
## Average Milkfat & Protein (%)

		Inland/Central	North Coast	Southern	NSW
Milkfat	July-18	3.78%	4.00%	3.90%	3.90%
	July-19	3.82%	4.10%	4.02%	3.99%
	July-20	3.80%	4.09%	4.06%	4.00%
	<b>% change 20/21</b>	<b>-0.6%</b>	<b>-0.3%</b>	<b>0.9%</b>	<b>0.2%</b>
		Inland/Central	North Coast	Southern	NSW
Protein	July-18	3.31%	3.35%	3.36%	3.35%
	July-19	3.30%	3.35%	3.39%	3.36%
	July-20	3.30%	3.41%	3.42%	3.39%
	<b>% change 20/21</b>	<b>0.0%</b>	<b>1.7%</b>	<b>1.1%</b>	<b>1.0%</b>

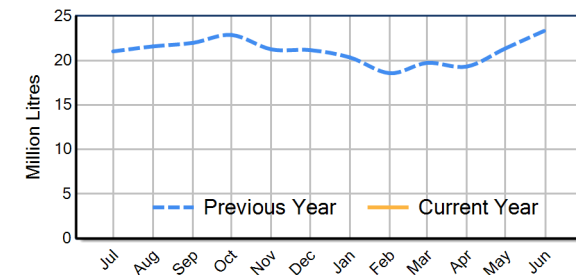
NSW Milk Production - Total Regions



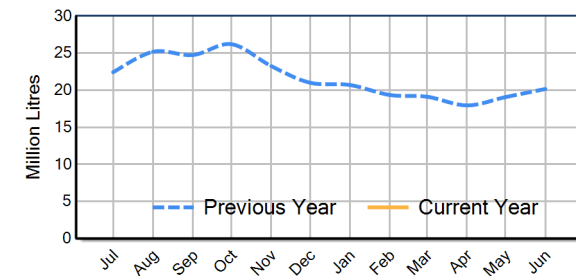
NSW Milk Production - Southern Region



NSW Milk Production - Inland/Central Region



NSW Milk Production - North Coast Region



Please note: These reports contain data based on a combination of voluntary direct reporting from processors, and data sourced from government agencies. Retrospective adjustments are possible if new or revised data is received.