

# Victoria Milk Production

## 23/24 by Region

### (Million Litres)



		Eastern			Northern			Western			Victoria		
		22/23	23/24	Var %	22/23	23/24	Var %	22/23	23/24	Var %	22/23	23/24	Var %
July		106.4	114.8	7.9%	114.6	109.1	-4.7%	165.4	157.4	-4.8%	386.4	381.3	-1.3%
	YTD	106.4	114.8	7.9%	114.6	109.1	-4.7%	165.4	157.4	-4.8%	386.4	381.3	-1.3%
August		144.8	151.3	4.5%	124.4	121.8	-2.1%	181.4	172.8	-4.7%	450.6	445.9	-1.0%
	YTD	251.3	266.1	5.9%	239.0	230.9	-3.4%	346.7	330.2	-4.8%	837.0	827.3	-1.2%
September		189.7	192.6	1.6%	147.2	146.4	-0.5%	190.9	186.1	-2.5%	527.7	525.1	-0.5%
	YTD	441.0	458.8	4.0%	386.2	377.3	-2.3%	537.6	516.3	-4.0%	1,364.7	1,352.4	-0.9%
October		216.8	218.4	0.7%	157.7	161.5	2.4%	201.2	203.0	0.9%	575.7	582.9	1.2%
	YTD	657.8	677.2	2.9%	543.8	538.8	-0.9%	738.8	719.3	-2.6%	1,940.4	1,935.3	-0.3%
November		197.8	211.1	6.7%	142.5	152.8	7.2%	179.0	189.9	6.1%	519.3	553.9	6.6%
	YTD	855.6	888.3	3.8%	686.3	691.6	0.8%	917.8	909.2	-0.9%	2,459.8	2,489.2	1.2%
December		190.2	189.7	-0.3%	136.6	145.6	6.6%	172.2	169.5	-1.6%	499.0	504.8	1.2%
	YTD	1,045.8	1,078.0	3.1%	822.9	837.2	1.7%	1,090.0	1,078.7	-1.0%	2,958.8	2,993.9	1.2%
January		159.6	168.6	5.7%	120.0	130.6	8.9%	143.7	148.2	3.1%	423.3	447.4	5.7%
	YTD	1,205.4	1,246.6	3.4%	942.9	967.8	2.6%	1,233.7	1,226.9	-0.6%	3,382.0	3,441.4	1.8%
February		121.2	135.4	11.7%	94.9	105.5	11.2%	107.6	116.0	7.8%	323.7	356.9	10.3%
	YTD	1,326.6	1,382.0	4.2%	1,037.8	1,073.4	3.4%	1,341.4	1,342.9	0.1%	3,705.7	3,798.3	2.5%
March		124.0	131.3	5.9%	99.4	107.3	7.9%	110.3	109.0	-1.2%	333.8	347.6	4.2%
	YTD	1,450.6	1,513.3	4.3%	1,137.2	1,180.7	3.8%	1,451.7	1,451.9	0.0%	4,039.5	4,145.9	2.6%
April		123.7			105.7			110.6			340.1		
	YTD	1,574.3			1,242.9			1,562.3			4,379.5		
May		129.1			123.4			135.7			388.2		
	YTD	1,703.4			1,366.3			1,698.0			4,767.7		
June		112.6			111.9			148.8			373.3		
	YTD	1,816.0			1,478.2			1,846.9			5,141.0		
<b>Total</b>		<b>1,816.0</b>			<b>1,478.2</b>			<b>1,846.9</b>			<b>5,141.0</b>		

Produced by the Economics, Data and Insights team at Dairy Australia, Source: Dairy Manufacturers

Please Note: These reports contain data based on a combination of voluntary direct reporting from processors, and data sourced from government agencies. Retrospective adjustments are possible if new or revised data is received.

# Milk production report (Litres '000s)

## Victoria

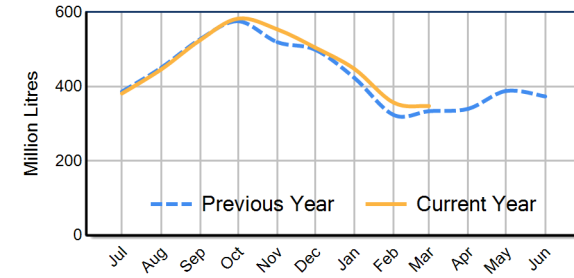


		Eastern	Northern	Western	VIC	
Month	March-22	133,143	107,878	113,202	354,223	
	March-23	123,998	99,423	110,330	333,750	
	March-24	131,345	107,317	108,976	347,638	
	<b>% change</b>	<b>5.9%</b>	<b>7.9%</b>	<b>-1.2%</b>	<b>4.2%</b>	
Region Share	March-23	37.2%	29.8%	33.1%	100.0%	
	March-24	37.8%	30.9%	31.3%	100.0%	
Year To Date			Eastern	Northern	Western	VIC
	2021/2022	1,577,577	1,230,567	1,537,860	4,346,005	
	2022/2023	1,450,601	1,137,180	1,451,698	4,039,479	
	2023/2024	1,513,337	1,180,668	1,451,911	4,145,916	
	<b>% change</b>	<b>4.3%</b>	<b>3.8%</b>	<b>0.0%</b>	<b>2.6%</b>	
Region Share	2022/2023	35.9%	28.2%	35.9%	100.0%	
	2023/2024	36.5%	28.5%	35.0%	100.0%	
Total			Eastern	Northern	Western	VIC
	2022/2023	1,815,995	1,478,179	1,846,866	5,141,041	
	<b>Region Share</b>	<b>35.3%</b>	<b>28.8%</b>	<b>35.9%</b>	<b>100.0%</b>	

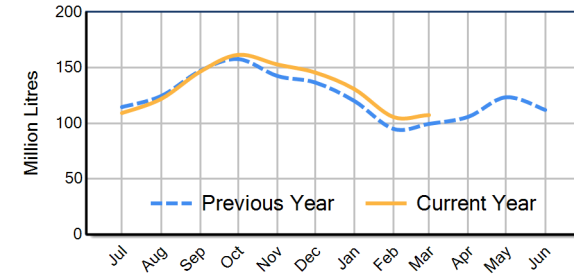
## Average Milkfat & Protein (%)

		Eastern	Northern	Western	VIC	
Milkfat	March-22	4.60%	4.40%	4.53%	4.52%	
	March-23	4.62%	4.40%	4.53%	4.52%	
	March-24	4.60%	4.43%	4.56%	4.53%	
	<b>% change 23/24</b>	<b>-0.5%</b>	<b>0.6%</b>	<b>0.7%</b>	<b>0.2%</b>	
Protein			Eastern	Northern	Western	VIC
	March-22	3.49%	3.46%	3.49%	3.48%	
	March-23	3.53%	3.47%	3.52%	3.51%	
	March-24	3.51%	3.47%	3.49%	3.49%	
	<b>% change 23/24</b>	<b>-0.5%</b>	<b>-0.1%</b>	<b>-0.9%</b>	<b>-0.5%</b>	

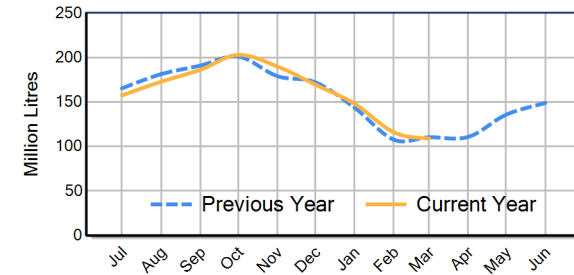
VIC Milk Production - Total Regions



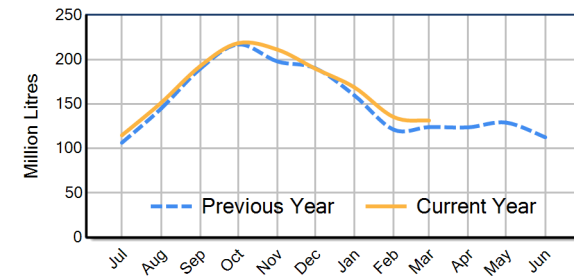
VIC Milk Production - Northern Region



VIC Milk Production - Western Region



VIC Milk Production - Eastern Region



Please note: These reports contain data based on a combination of voluntary direct reporting from processors, and data sourced from government agencies. Retrospective adjustments are possible if new or revised data is received.