

# New South Wales Milk Production

## 23/24 by Region

### (Million Litres)



		Inland/Central			North Coast			Southern			New South Wales		
		22/23	23/24	Var %	22/23	23/24	Var %	22/23	23/24	Var %	22/23	23/24	Var %
July		20.1	21.6	7.6%	20.3	21.7	6.9%	40.3	41.4	2.5%	80.7	84.7	4.9%
	YTD	20.1	21.6	7.6%	20.3	21.7	6.9%	40.3	41.4	2.5%	80.7	84.7	4.9%
August		20.3	22.6	11.1%	21.6	23.4	8.3%	43.6	44.1	1.2%	85.5	90.1	5.3%
	YTD	40.4	44.2	9.4%	41.9	45.1	7.6%	84.0	85.5	1.8%	166.3	174.8	5.1%
September		20.6	21.9	6.5%	24.0	24.3	1.4%	45.1	45.4	0.6%	89.6	91.6	2.1%
	YTD	60.9	66.1	8.4%	65.9	69.4	5.3%	129.1	130.9	1.4%	255.9	266.3	4.1%
October		20.9	23.3	11.4%	25.0	25.1	0.3%	46.9	47.9	2.1%	92.8	96.2	3.7%
	YTD	81.8	89.4	9.2%	90.9	94.4	4.0%	176.0	178.7	1.6%	348.7	362.5	4.0%
November		19.4	23.2	19.5%	22.6	24.8	9.9%	44.5	46.0	3.5%	86.4	94.0	8.8%
	YTD	101.3	112.6	11.2%	113.4	119.2	5.1%	220.4	224.8	2.0%	435.1	456.6	4.9%
December		20.1	23.1	14.9%	21.9	24.1	9.9%	44.2	46.6	5.4%	86.2	93.8	8.8%
	YTD	121.4	135.7	11.8%	135.3	143.3	5.9%	264.6	271.3	2.5%	521.3	550.4	5.6%
January		19.7	22.0	11.9%	20.4	22.7	11.3%	41.0	43.9	7.0%	81.0	88.6	9.3%
	YTD	141.1	157.7	11.8%	155.7	166.0	6.6%	305.6	315.2	3.1%	602.4	638.9	6.1%
February		18.2	20.5	12.6%	18.8	19.2	2.5%	35.9	37.9	5.6%	72.9	77.7	6.6%
	YTD	159.3	178.2	11.9%	174.5	185.2	6.2%	341.5	353.1	3.4%	675.3	716.6	6.1%
March		19.8	21.3	7.8%	19.7	19.6	-0.8%	38.8	39.4	1.3%	78.4	80.3	2.4%
	YTD	179.1	199.6	11.4%	194.2	204.8	5.5%	380.4	392.5	3.2%	753.6	796.9	5.7%
April		19.7			18.8			37.3			75.8		
	YTD	198.7			213.0			417.7			829.4		
May		21.5			19.4			39.1			80.0		
	YTD	220.2			232.4			456.8			909.4		
June		21.5			19.6			39.3			80.4		
	YTD	241.7			252.1			496.1			989.9		
<b>Total</b>		<b>241.7</b>			<b>252.1</b>			<b>496.1</b>			<b>989.9</b>		

Produced by the Economics, Data and Insights team at Dairy Australia, Source: Dairy Manufacturers

Please Note: These reports contain data based on a combination of voluntary direct reporting from processors, and data sourced from government agencies. Retrospective adjustments are possible if new or revised data is received.

# Milk production report (Litres '000s)

## New South Wales

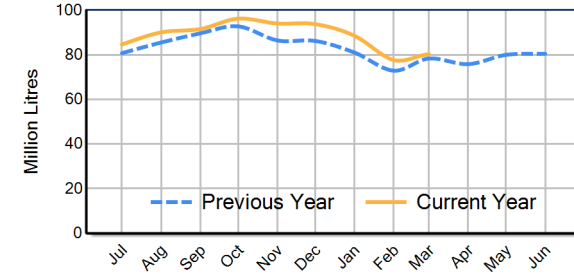


		Inland/Central	North Coast	Southern	NSW
Month	March-22	20,164	20,335	40,214	80,713
	March-23	19,794	19,736	38,836	78,366
	March-24	21,346	19,571	39,354	80,271
	<b>% change</b>	<b>7.8%</b>	<b>-0.8%</b>	<b>1.3%</b>	<b>2.4%</b>
Region Share	March-23	25.3%	25.2%	49.6%	100.0%
	March-24	26.6%	24.4%	49.0%	100.0%
		Inland/Central	North Coast	Southern	NSW
Year To Date	2021/2022	198,131	229,929	415,540	843,599
	2022/2023	179,066	194,195	380,363	753,625
	2023/2024	199,561	204,812	392,497	796,870
	<b>% change</b>	<b>11.4%</b>	<b>5.5%</b>	<b>3.2%</b>	<b>5.7%</b>
Region Share	2022/2023	23.8%	25.8%	50.5%	100.0%
	2023/2024	25.0%	25.7%	49.3%	100.0%
		Inland/Central	North Coast	Southern	NSW
Total	2022/2023	241,743	252,063	496,057	989,863
	<b>Region Share</b>	<b>24.4%</b>	<b>25.5%</b>	<b>50.1%</b>	<b>100.0%</b>

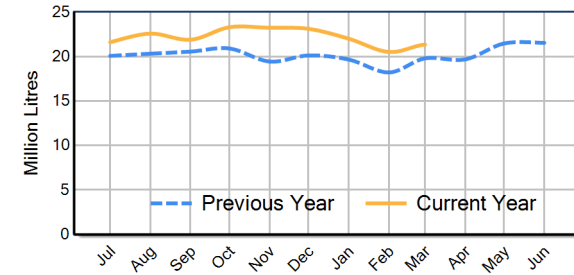
## Average Milkfat & Protein (%)

		Inland/Central	North Coast	Southern	NSW
Milkfat	March-22	4.11%	4.20%	4.24%	4.20%
	March-23	4.03%	4.11%	4.22%	4.14%
	March-24	3.97%	4.07%	4.20%	4.11%
	<b>% change 23/24</b>	<b>-1.6%</b>	<b>-1.0%</b>	<b>-0.4%</b>	<b>-0.9%</b>
		Inland/Central	North Coast	Southern	NSW
Protein	March-22	3.33%	3.33%	3.40%	3.37%
	March-23	3.33%	3.31%	3.42%	3.37%
	March-24	3.32%	3.29%	3.40%	3.35%
	<b>% change 23/24</b>	<b>-0.4%</b>	<b>-0.5%</b>	<b>-0.6%</b>	<b>-0.5%</b>

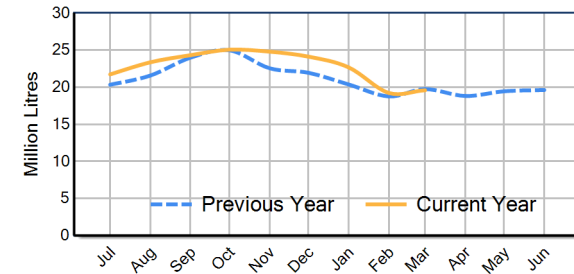
NSW Milk Production - Total Regions



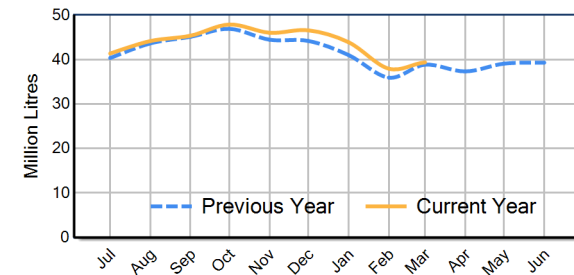
NSW Milk Production - Inland/Central Region



NSW Milk Production - North Coast Region



NSW Milk Production - Southern Region



Please note: These reports contain data based on a combination of voluntary direct reporting from processors, and data sourced from government agencies. Retrospective adjustments are possible if new or revised data is received.